

TEQZO Environments



Integrated Consoles

Features

- > As per IEC 60297/ DIN 41494
- > Heavy Duty construction
- > Powder coated steel understructure
- > Integrated display infrastructure
- > Up to 14U rack mount capacity
- > ISO 11064 compliant design
- > Ideal for compact control rooms
- > Inbuilt thermal management
- > Display up to 50" LCD possible.



Models

Model : IC1



General Specification :

Integrated consoles are unique type of console that integrates rack mount unit and rear side display infrastructure.

Construction :

Rack mount unit is constructed using 2mm thick CRCA framework with 0.8mm thick outer panel. It has front and rear open-able metal shutters with magnetic latch and optional lock. Shutters can be with clear acrylic window or with natural ventilation to forced cooling ventilation. Display infrastructure is made of 2mm thick tubular structure with 0.8mm thick outer panels. The Display infrastructure holds flexible mounts to hold from simple 21" LCD to up to 50" LCD or a combination of both.

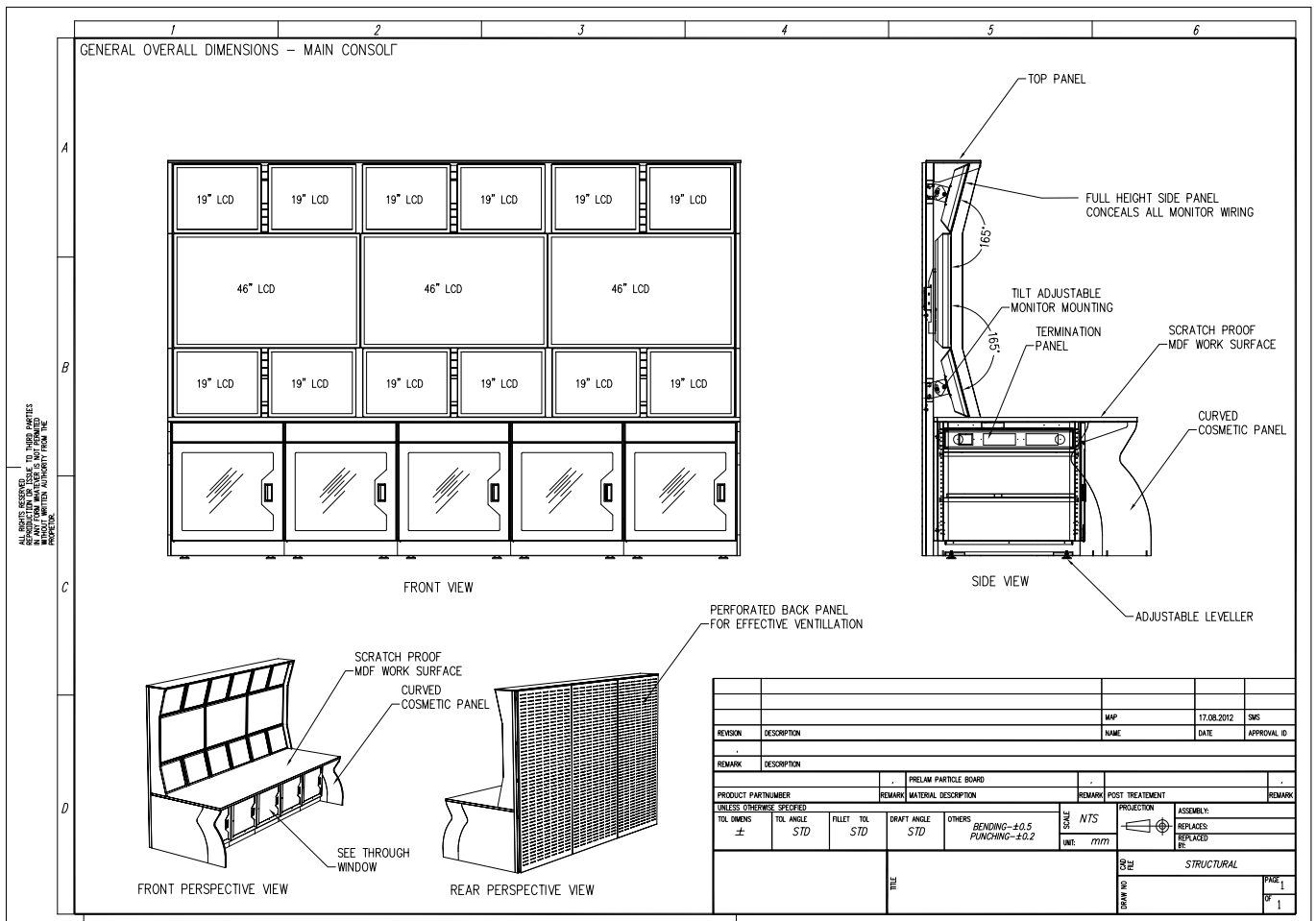
Work Surface : All work surfaces are made of 25mm pre-laminated MDF.

Wire Management : Integrated consoles have two levels of wire manager conduits along with power and data termination ports both within the cabinet as well as within the display infrastructure.

Storage Capacity : Equipments on the Integrated console can be stored in the rack mount unit.

Finish : All metal items are powder-coated up to 50micron thickness to the desired shade. Shades of pre-laminated MDF can be selected from our standard colours and finishes.

Technical Details



Ultra Modern



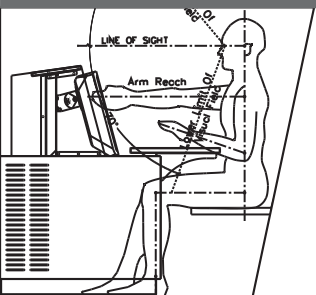
We believe that technical environments is no different from any other workspace when it comes to aesthetic appeal. Work environments need to be inspiring and should positively influence the morale and confidence of the operator in order to deliver performance. All our products are frequently updated to ensure that it matches with the changes in lifestyle and technology.

State Of Art



We are obsessed with technology and constantly strive to update our products with the best in technology, materials and processes. We adopt the latest engineering tools for designing each and every part of our solution to ensure that they are optimized of the best performance.

Human Centric



We believe that the best way to achieve operator performance is to respect human factors. Work environments should inspire the individual to uplift his morale and confidence. Our team has extensive knowledge in human factors engineering to ensure the products and solutions comply with the highest standards of ergonomics.

TEQZO Environments

Head Office :
TEQZO Retail Products Private Limited
No. 410, CMR Road, Kalyan Nagar,
Bangalore 560043. INDIA.

Tel : +91 80 4121 8823
Email : enquiry@teqzo.com
URL : environments.teqzo.com

Contact us for more details.

We are a company engaging in research, design, manufacture, supply and commission of products meant for technical interiors and environments. Our focus is on environments like control rooms, control centres, shop floors and other work environments.

We are an ISO 9001:2008 company. We have achieved substantial growth by servicing clients including governmental organizations and multi national companies both in India and abroad.