

TEQZO Environments



Low Profile Consoles

Features

Low Profile Consoles

- > As per IEC 60297/ DIN 41494
- > Modular construction
- > Knock-down design
- > Powder coated steel shutters
- > Multiple monitor mounting
- > Integrated wire management
- > Medium duty application
- > Dual tone side panel
- > High on Aesthetics



Models

Model:LPC-1



Model: LPC-2



Model: LPC-3



Model: LPC-4



General Specification :

Low Profile consoles are cabinet mount consoles that are modular, knock-down units which can be joined to developed any desired layout for medium duty control room application.

Construction :

Low Profile Console cabinets are constructed using 18mm thick pre-laminated MDF and 2mm thick powder coated steel. Cabinets have provision for front or rear opening to access the equipments. Cabinet are enclosed with 0.8mm thick powder coated metal shutters with louvres for ventilation. Provision for forced cooling is integral to all shutters. CPU and other equipments can be stored below the consoles.

Work Surface : All work surfaces are made of

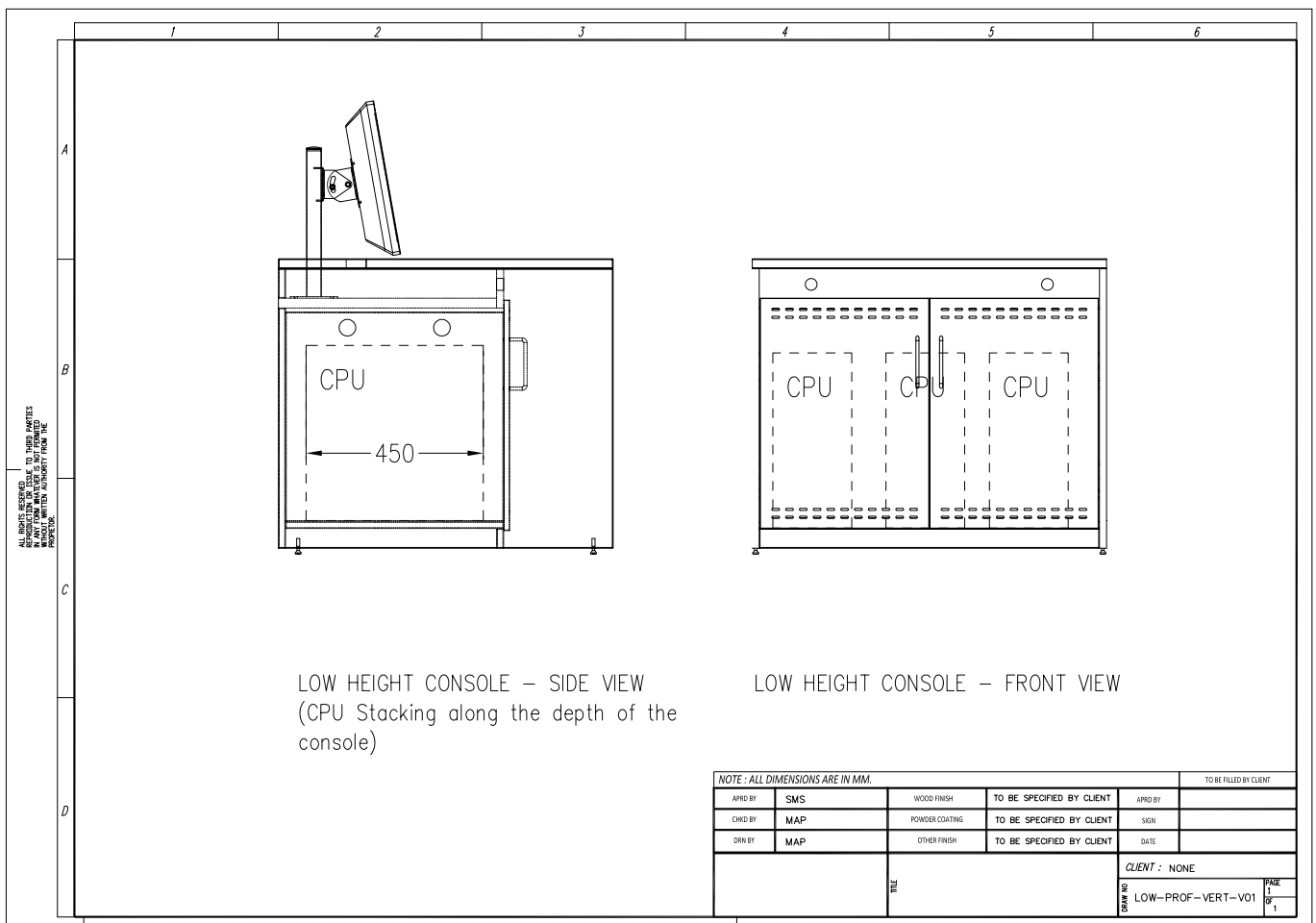
25mm (optional 35mm) pre-laminated MDF.

Wire Management : Low profile consoles have continuous two level wire management conduits to channel power and data cables. Power and data termination ports are also available between the conduits. Work surfaces have integrated wire management grommets.

Storage Capacity : Low profile consoles have moderate storage facility. Regular CPU and other light duty equipments can be stored within the cabinet.

Finish : All metal items are powder-coated up to 50micron thickness to the desired shade. Shades of pre-laminated MDF can be selected from our standard colours and finishes.

Technical Details



Ultra Modern



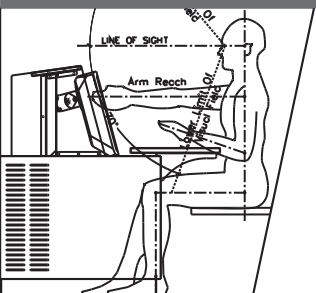
We believe that technical environments is no different from any other workspace when it comes to aesthetic appeal. Work environments need to be inspiring and should positively influence the morale and confidence of the operator in order to deliver performance. All our products are frequently updated to ensure that it matches with the changes in lifestyle and technology.

State Of Art



We are obsessed with technology and constantly strive to update our products with the best in technology, materials and processes. We adopt the latest engineering tools for designing each and every part of our solution to ensure that they are optimized of the best performance.

Human Centric



We believe that the best way to achieve operator performance is to respect human factors. Work environments should inspire the individual to uplift his morale and confidence. Our team has extensive knowledge in human factors engineering to ensure the products and solutions comply with the highest standards of ergonomics.

TEQZO Environments

Head Office :
TEQZO Retail Products Private Limited
No. 410, CMR Road, Kalyan Nagar,
Bangalore 560043. INDIA.

Tel : +91 80 4121 8823
Email : enquiry@teqzo.com
URL : environments.teqzo.com

Contact us for more details.

We are a company engaging in research, design, manufacture, supply and commission of products meant for technical interiors and environments. Our focus is on environments like control rooms, control centres, shop floors and other work environments.

We are an ISO 9001:2008 company. We have achieved substantial growth by servicing clients including governmental organizations and multi national companies both in India and abroad.