

TEQZO Environments



On Board Consoles

- > As per IEC 60297/ DIN 41494
- > Modular construction
- > Knock-down design
- > Floor grouting for on-board mounting
- > Ergonomic on-board handle bar
- > Powder coated GI steel construction
- > Multi-tier monitor mounting
- > Integrated wire management
- > Heavy duty application
- > High on Aesthetics



Models

Model: OBC - 1



Model : OBC - 2



Model : OBC - 3



General Specification :

On-board consoles are modular, knock-down and floor mounted units which can be joined to developed any desired layout for on-board application.

Construction :

On-board consoles are built using powder coated GI steel. Understructure is made of 2mm tubular sections with 1mm thick outer panels secured with screws. Understructure can be grouted firmly to the floor. Ergonomic stainless steel handle bar is an integral part of the console. On-board consoles can be fitted with multi-tier monitor systems. CPU and other equipments can be stored below the consoles.

Work Surface : All work surfaces are made of 25mm (optional 35mm) marine grade pre-laminat-

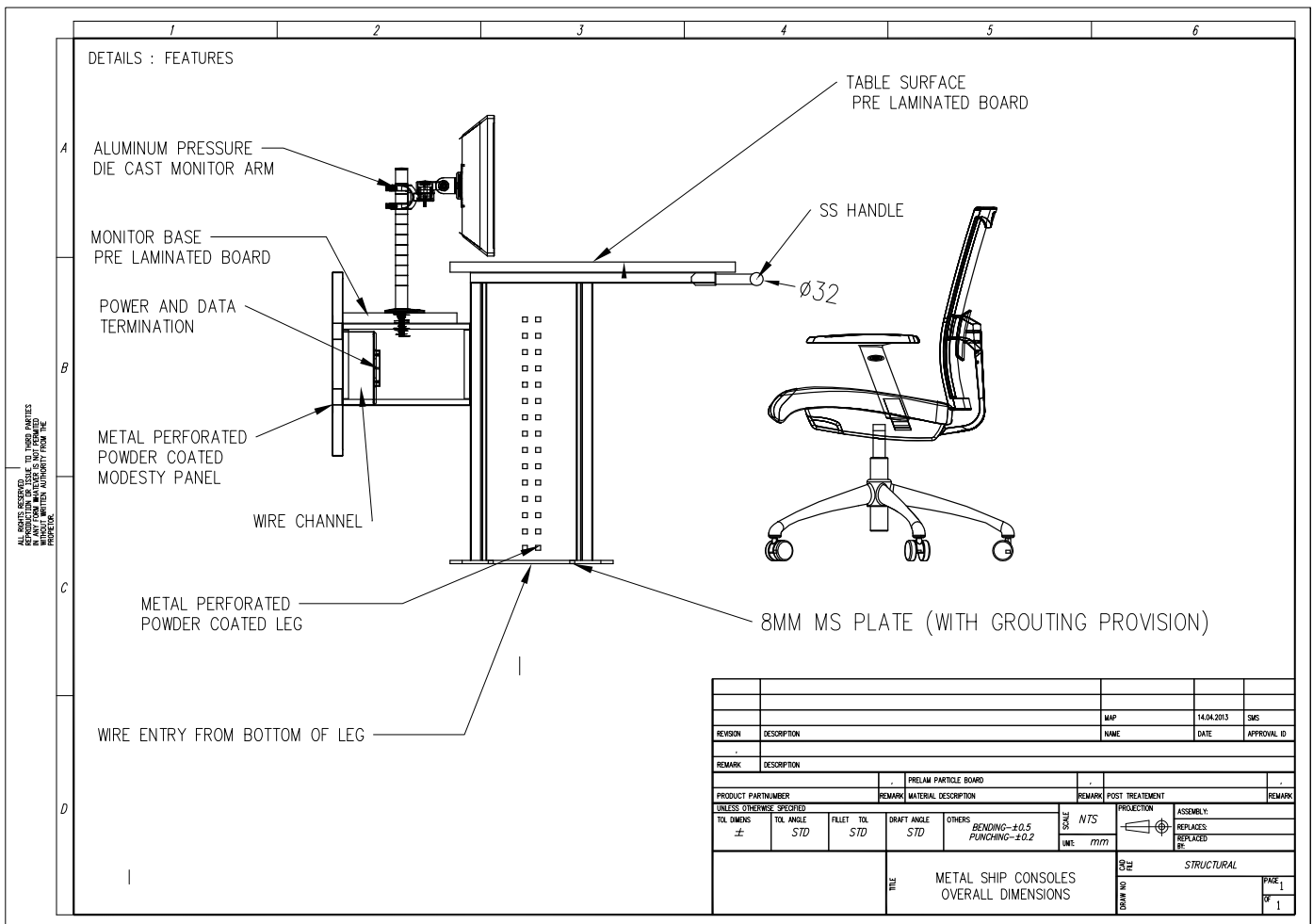
ed MDF. Secondary monitor mounting base is also made of similar material.

Wire Management : On-board consoles have continuous two level wire management conduits to channel power and data cables. Power and data termination modules are also available between the conduits.

Storage Capacity : On-board consoles have limited storage facility as the CPU and other equipments are expected to be stored in mounting racks. However, leg based accessories are available to store additional equipments.

Finish : All metal items are powder-coated up to 50micron thickness to the desired shade. Shades of pre-laminated MDF can be selected from our standard colours and finishes.

Technical Details



Ultra Modern



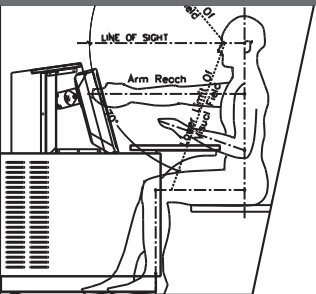
We believe that technical environments is no different from any other workspace when it comes to aesthetic appeal. Work environments need to be inspiring and should positively influence the morale and confidence of the operator in order to deliver performance. All our products are frequently updated to ensure that it matches with the changes in lifestyle and technology.

State Of Art



We are obsessed with technology and constantly strive to update our products with the best in technology, materials and processes. We adopt the latest engineering tools for designing each and every part of our solution to ensure that they are optimized of the best performance.

Human Centric



We believe that the best way to achieve operator performance is to respect human factors. Work environments should inspire the individual to uplift his morale and confidence. Our team has extensive knowledge in human factors engineering to ensure the products and solutions comply with the highest standards of ergonomics.

TEQZO Environments

Head Office :
TEQZO Retail Products Private Limited
No. 410, CMR Road, Kalyan Nagar,
Bangalore 560043. INDIA.

Tel : +91 80 4121 8823
Email : enquiry@teqzo.com
URL : environments.teqzo.com

We are a company engaging in research, design, manufacture, supply and commission of products meant for technical interiors and environments. Our focus is on environments like control rooms, control centres, shop floors and other work environments.

We are an ISO 9001:2008 company. We have achieved substantial growth by servicing clients including governmental organizations and multi national companies both in India and abroad.

Contact us for more details.