

**TEQZO** Environments



**Slat Wall Consoles**

- > Modular and Knock-down design
- > Linear slat wall panel to hang display
- > Integrated wire management
- > More privacy & more flexibility
- > Integrated wire management
- > Inbuilt thermal management
- > Pin-up board and writing board
- > High on Aesthetics
- > Designed as per ISO 11064



## Models

Model : SWC1



**General Specification :**

Slat wall consoles are modular cabinet type consoles with heavy duty aluminium slat-wall partition as an integral part of the consoles. Slat-walls can hang displays and other accessories.

**Construction :**

Slat-wall consoles are constructed using 75mm thick slat-wall partition and 18mm thick pre-laminated MDF cabinet. Slat wall extrusions are made of 2mm thick aluminium alloy 6063T6 powder coated with up to 50micron thickness. Other partition structure is made of 2mm thick powder coated CRCA. Partition has inbuilt pin-up and writing board apart from internal wiring. Cabinet is constructed using 18mm pre-laminated MDF using modular fittings. Cabinet has metal powder coated shutters with heavy duty CPU pull out tray.

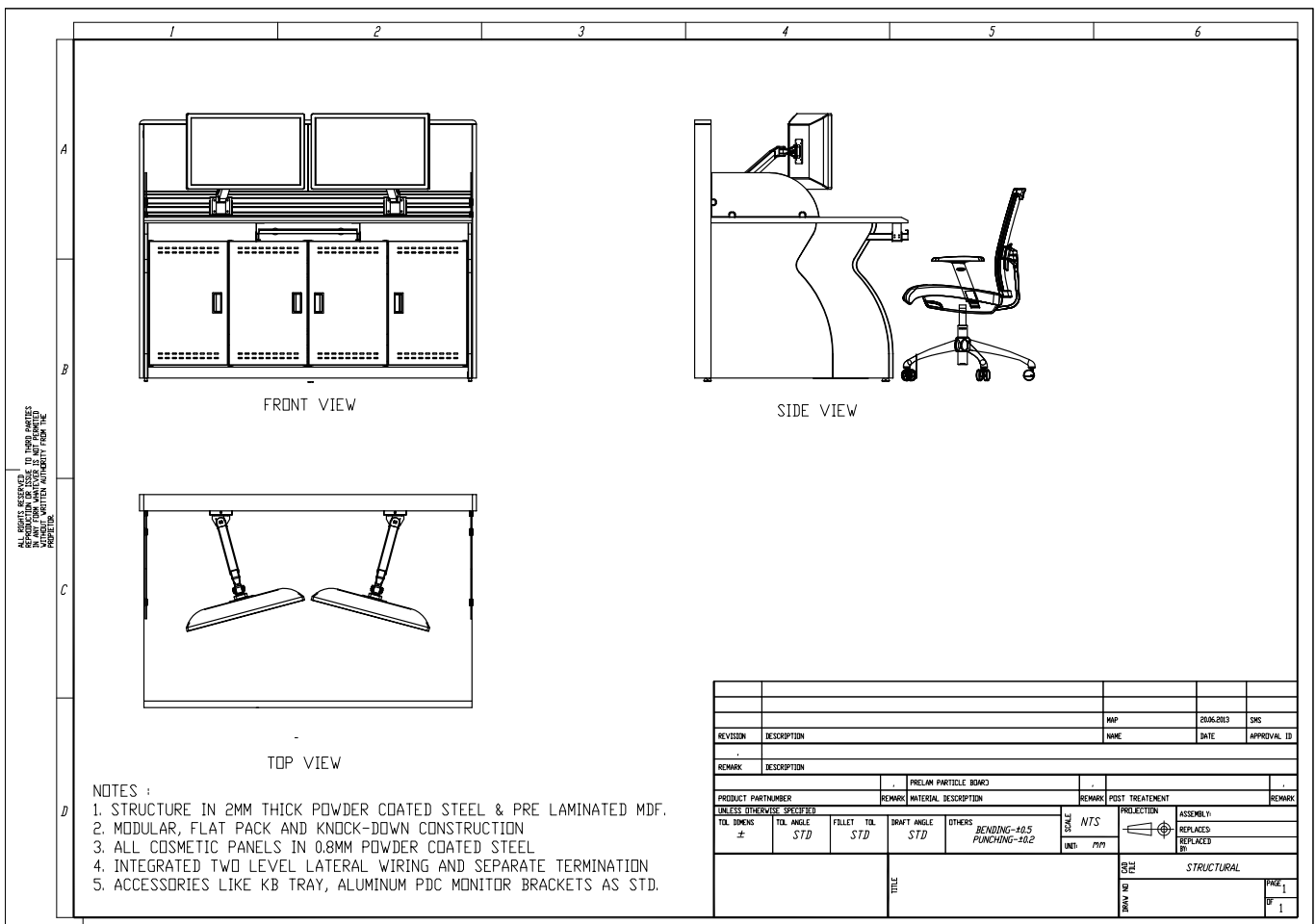
**Work Surface :** All work surfaces are made of 25mm pre-laminated MDF with high scratch resistance, seamless joints, flammability –class A and non porous and edges covered with 2mm edge-band.

**Wire Management :** Slat wall consoles have continuous two level wire management conduits to channel power and data cables. Power and data termination modules are also available between the conduits.

**Storage Capacity :** Slat-wall consoles have storage facility for CPU and other equipments within the cabinet.

**Finish :** All metal items are powder-coated up to 50micron thickness to the desired shade. Shades of pre-laminated MDF can be selected from our standard colours and finishes.

**Technical Details**



## Ultra Modern



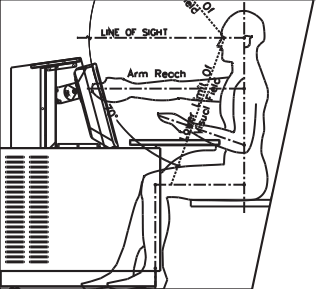
We believe that technical environments is no different from any other workspace when it comes to aesthetic appeal. Work environments need to be inspiring and should positively influence the morale and confidence of the operator in order to deliver performance. All our products are frequently updated to ensure that it matches with the changes in lifestyle and technology.

## State Of Art



We are obsessed with technology and constantly strive to update our products with the best in technology, materials and processes. We adopt the latest engineering tools for designing each and every part of our solution to ensure that they are optimized of the best performance.

## Human Centric



We believe that the best way to achieve operator performance is to respect human factors. Work environments should inspire the individual to uplift his morale and confidence. Our team has extensive knowledge in human factors engineering to ensure the products and solutions comply with the highest standards of ergonomics.

**TEQZO** Environments

Head Office :  
TEQZO Retail Products Private Limited  
No. 410, CMR Road, Kalyan Nagar,  
Bangalore 560043. INDIA.

Tel : +91 80 4121 8823  
Email : [enquiry@teqzo.com](mailto:enquiry@teqzo.com)  
URL : [environments.teqzo.com](http://environments.teqzo.com)

Contact us for more details.

We are a company engaging in research, design, manufacture, supply and commission of products meant for technical interiors and environments. Our focus is on environments like control rooms, control centres, shop floors and other work environments.

We are an ISO 9001:2008 company. We have achieved substantial growth by servicing clients including governmental organizations and multi national companies both in India and abroad.