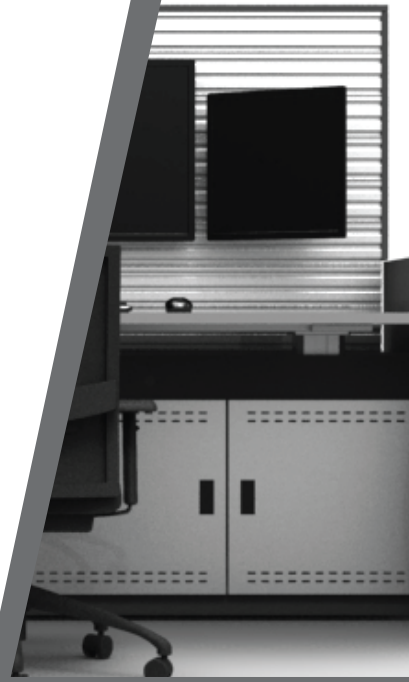


**TEQZO** Environments



**ATC Consoles**

- > As per IEC 60297/ DIN 41494
- > Modular (vertical & horizontal)
- > Knock-down design
- > Powder coated steel understructure
- > State-of-art automatic lift column
- > Sleek and Modern aesthetics.
- > ISO 11064 compliant design



Models

Model: ATCC-1



Model: ATCC-3



Model: ATCC - 2



General Specification :

ATC Consoles consist of modular slat wall partition with retractable rack mount cabinet and automatic height adjustable work surface.

Construction :

Modular slat wall partition is made of steel powder coated structure. Slat walls provide completely flexibility to hang monitors and other equipments. Retractable rack mount structure is a 14U 19" rack based module which is independent of the slat wall module. Work surface is mounted on an automatic dual column electronic system with touch controls and adequate safety features.

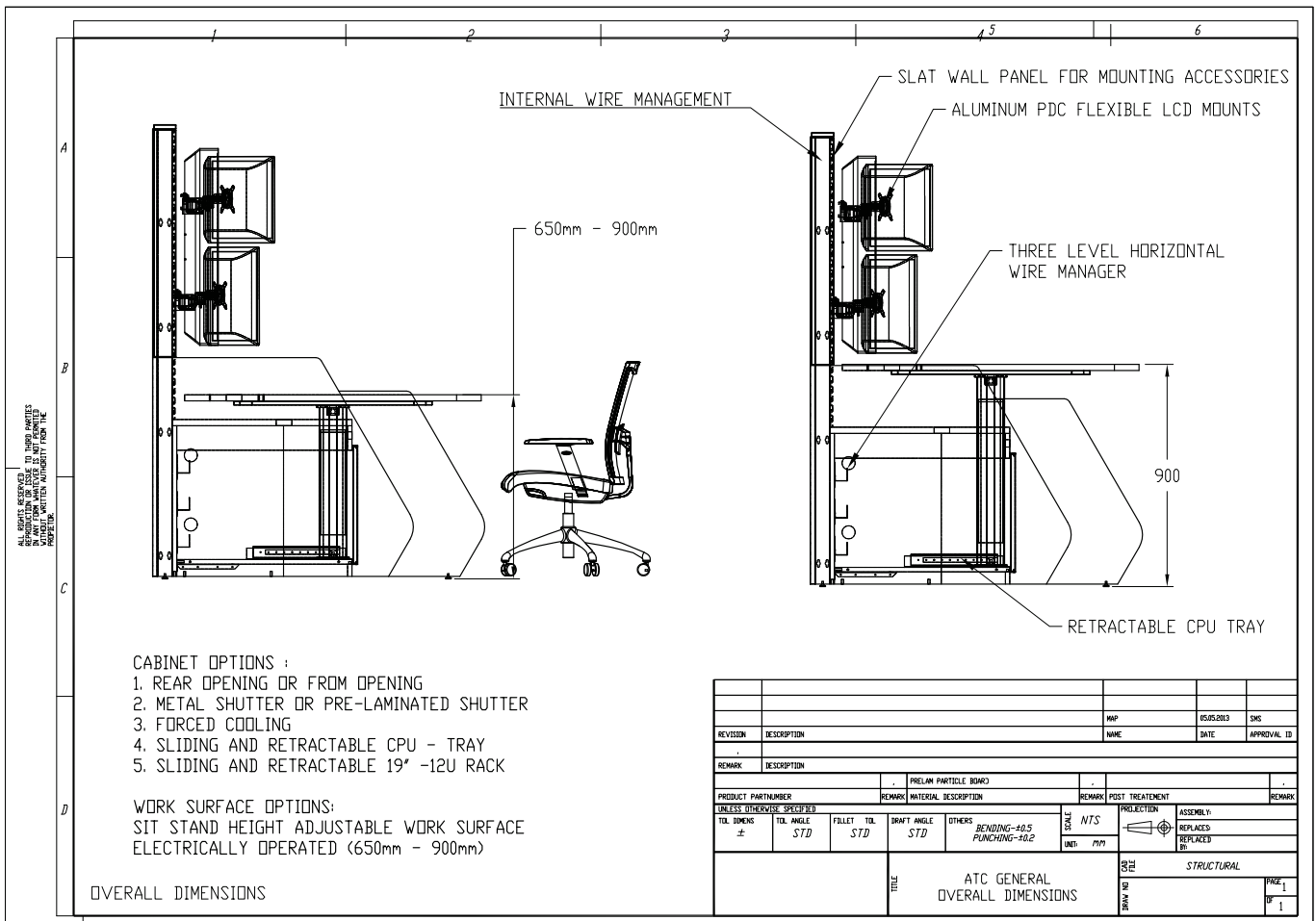
Work Surface : All work surfaces are made of 25mm (optional 35mm) pre-laminated MDF.

Wire Management : Slat wall partition of the ATC console have two levels of wire manager conduits along with power and data termination ports. Retractable rack mount structure will have its own termination ports.

Storage Capacity : Equipments on the ATC console can be stored in the retractable rack mount unit. Display elements like monitors can be fixed on the slat walls provided.

Finish : All metal items are powder-coated up to 50micron thickness to the desired shade. Shades of pre-laminated MDF can be selected from our standard colours and finishes.

Technical Details



## Ultra Modern



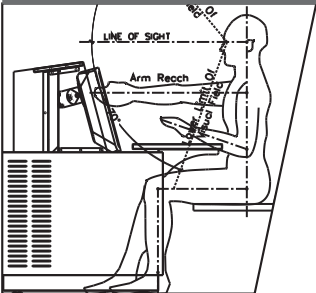
We believe that technical environments is no different from any other workspace when it comes to aesthetic appeal. Work environments need to be inspiring and should positively influence the morale and confidence of the operator in order to deliver performance. All our products are frequently updated to ensure that it matches with the changes in lifestyle and technology.

## State Of Art



We are obsessed with technology and constantly strive to update our products with the best in technology, materials and processes. We adopt the latest engineering tools for designing each and every part of our solution to ensure that they are optimized of the best performance.

## Human Centric



We believe that the best way to achieve operator performance is to respect human factors. Work environments should inspire the individual to uplift his morale and confidence. Our team has extensive knowledge in human factors engineering to ensure the products and solutions comply with the highest standards of ergonomics.

**TEQZO** Environments

Head Office :  
TEQZO Retail Products Private Limited  
No. 410, CMR Road, Kalyan Nagar,  
Bangalore 560043. INDIA.

Tel : +91 80 4121 8823  
Email : [enquiry@teqzo.com](mailto:enquiry@teqzo.com)  
URL : [environments.teqzo.com](http://environments.teqzo.com)

Contact us for more details.

We are a company engaging in research, design, manufacture, supply and commission of products meant for technical interiors and environments. Our focus is on environments like control rooms, control centres, shop floors and other work environments.

We are an ISO 9001:2008 company. We have achieved substantial growth by servicing clients including governmental organizations and multi national companies both in India and abroad.