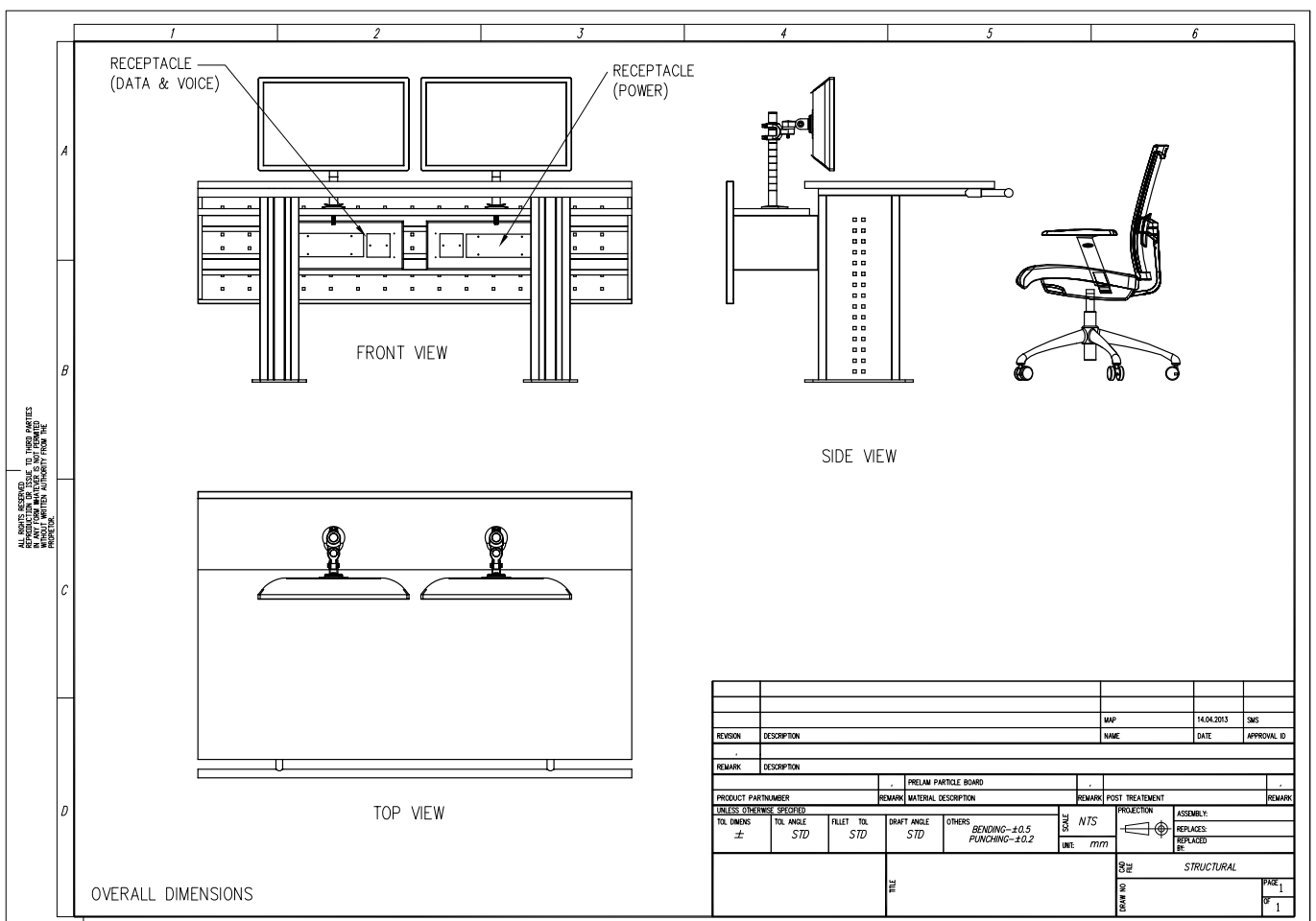
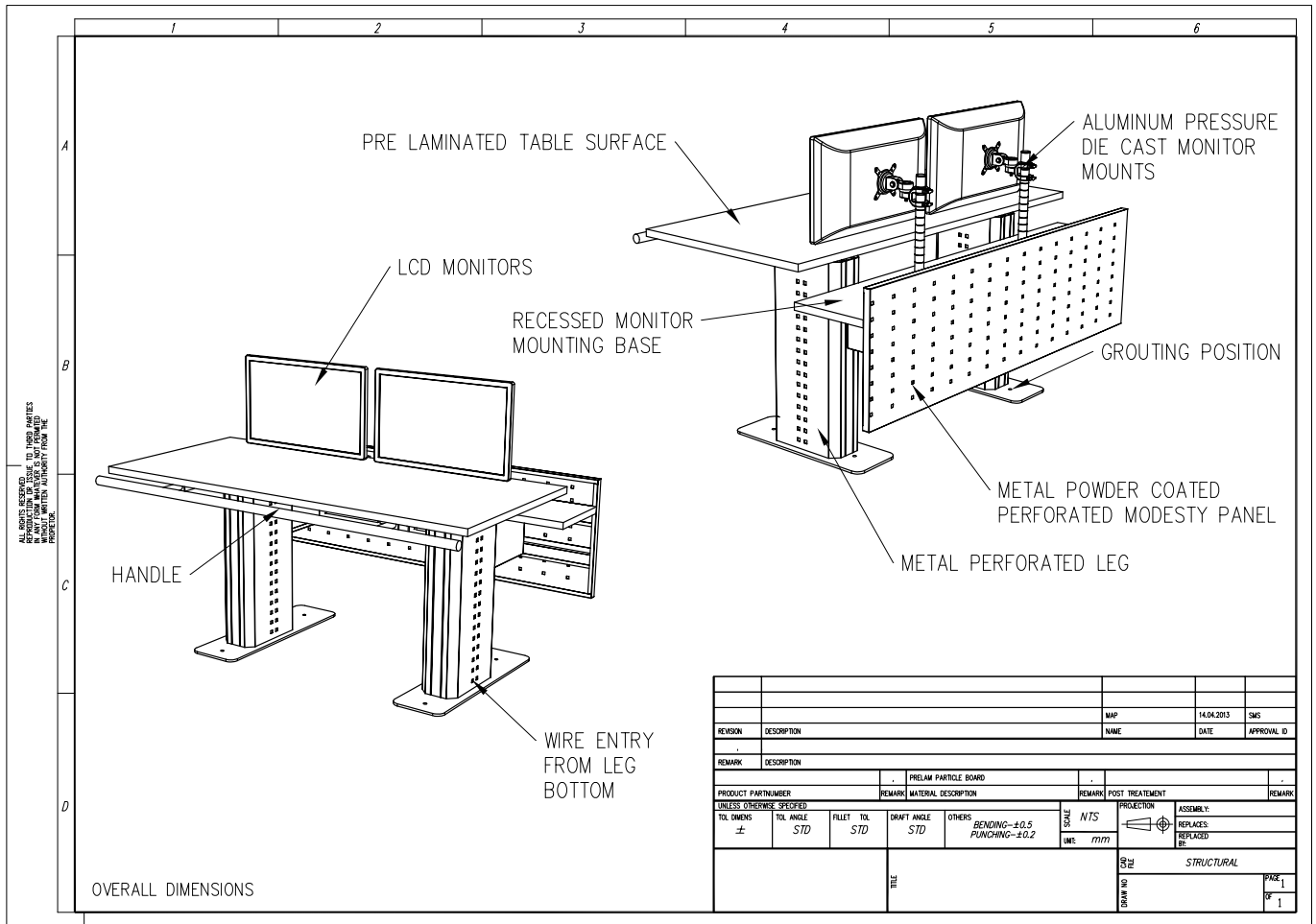
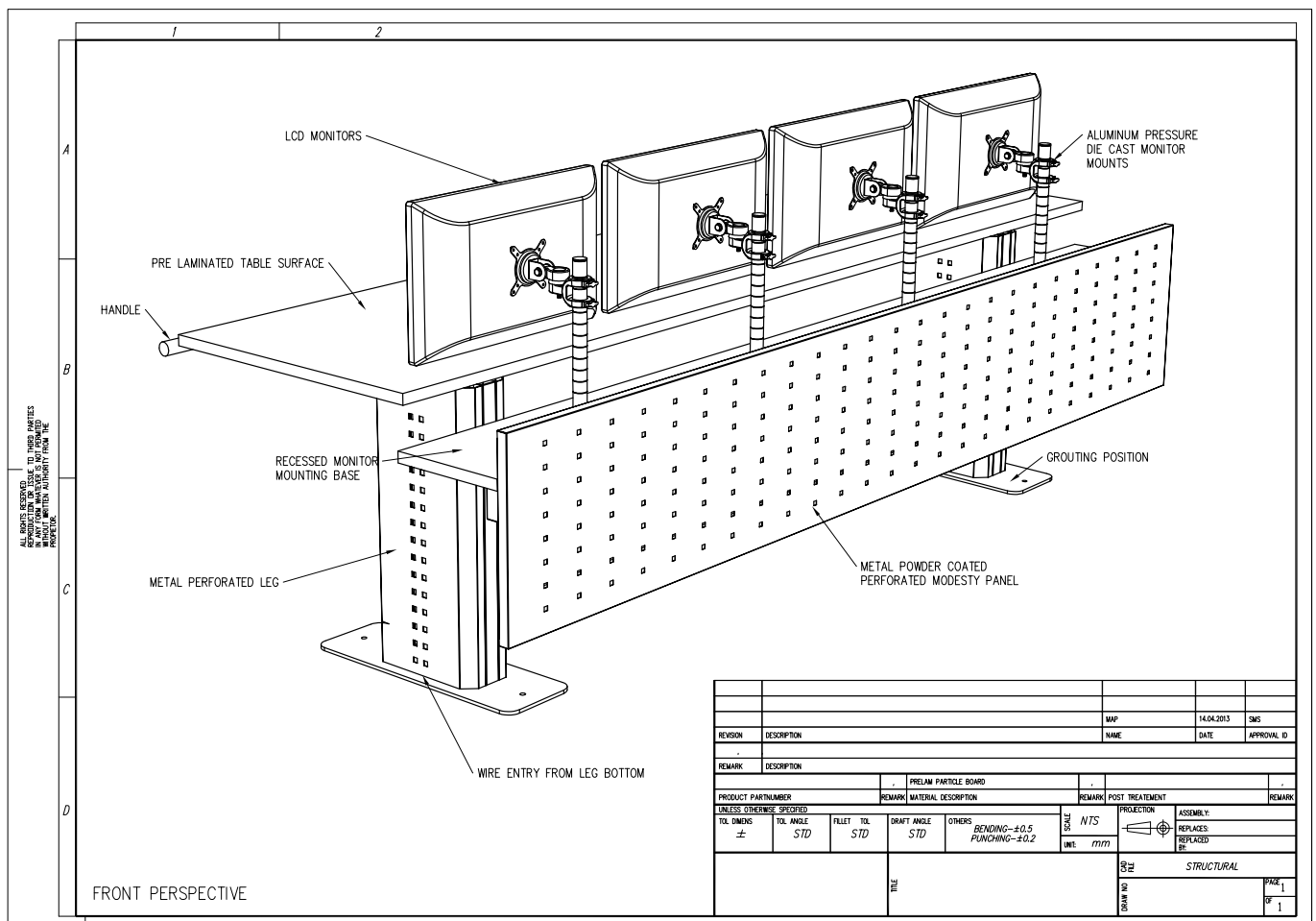
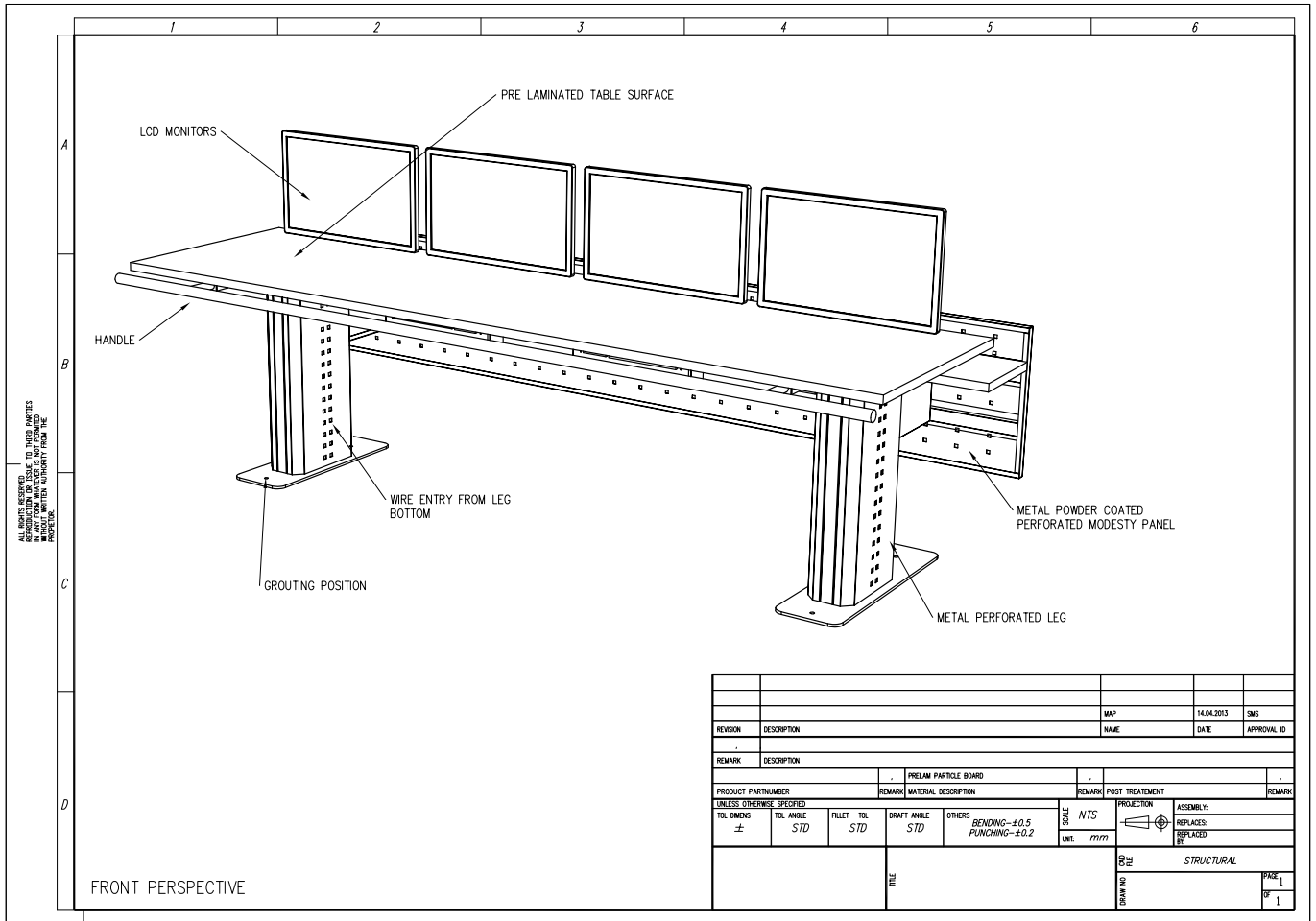


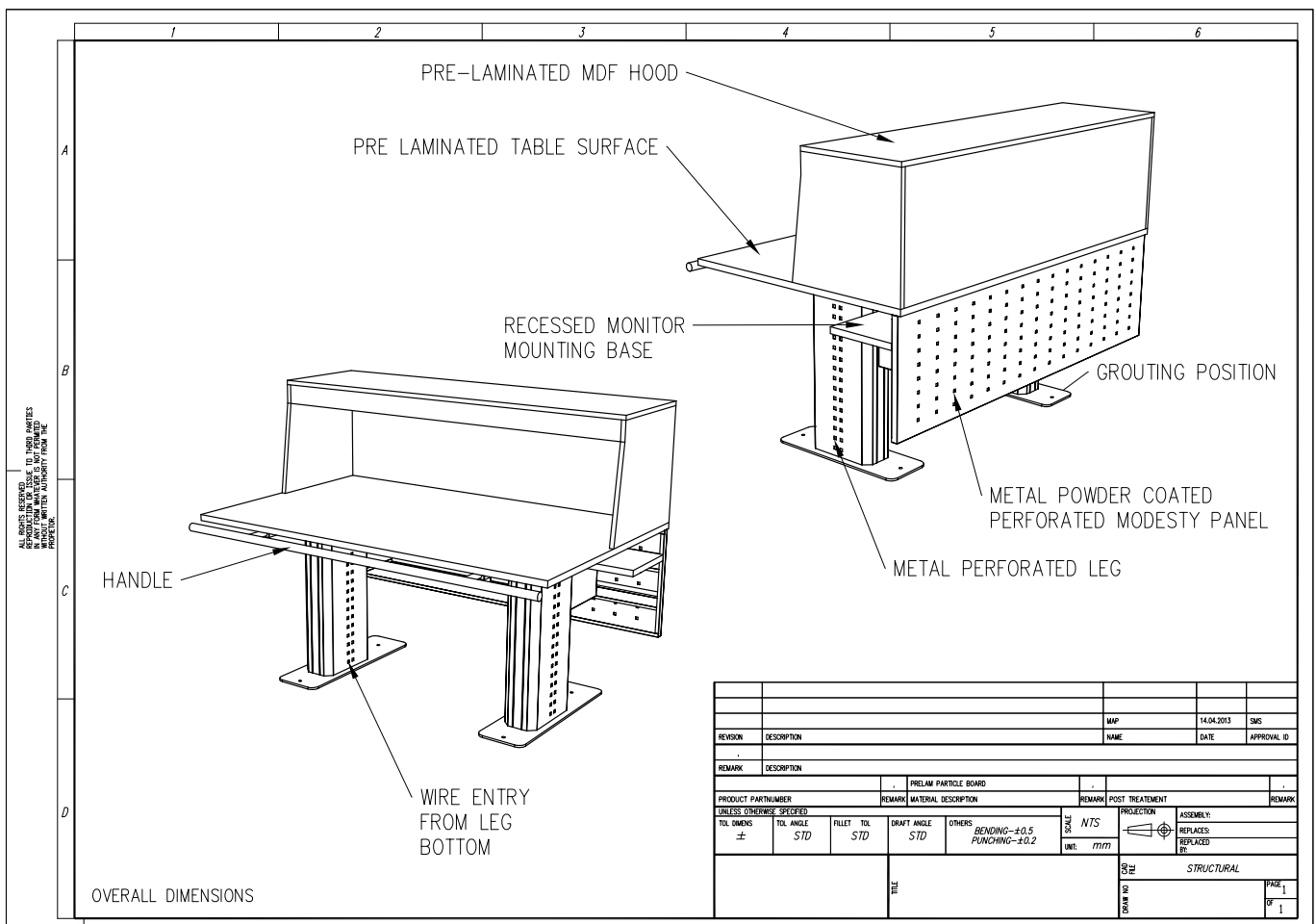
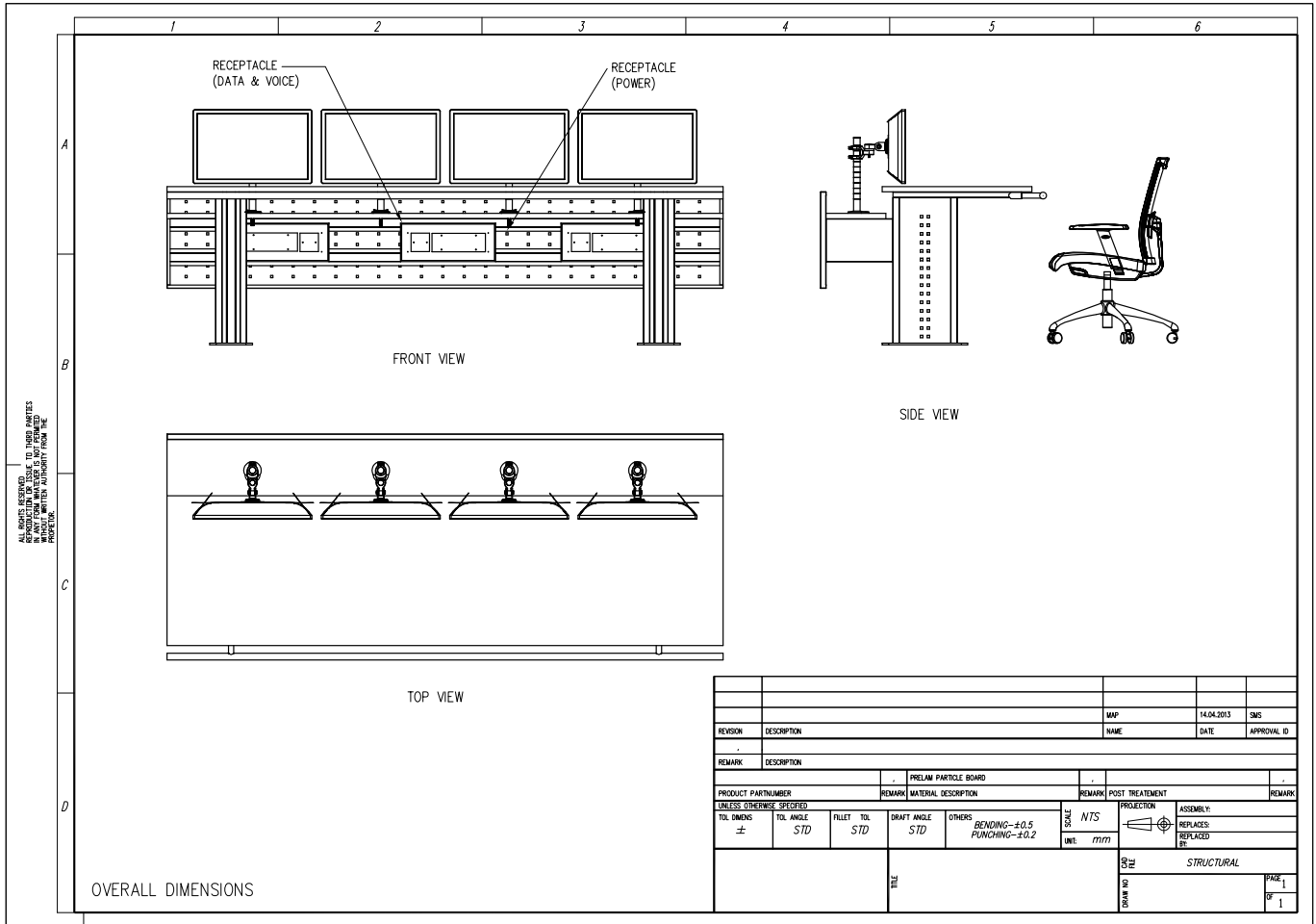
**TEQZO** Environments

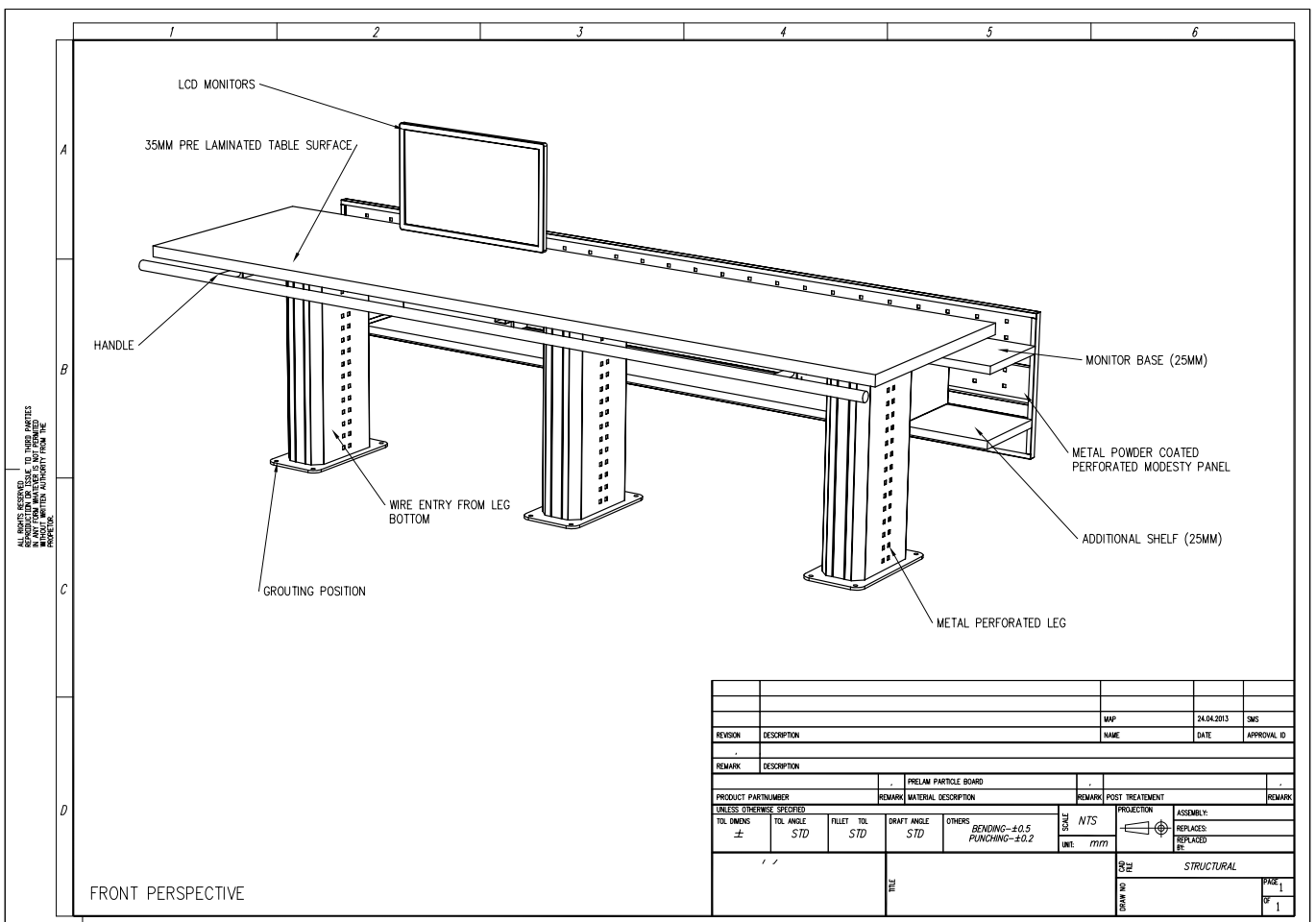
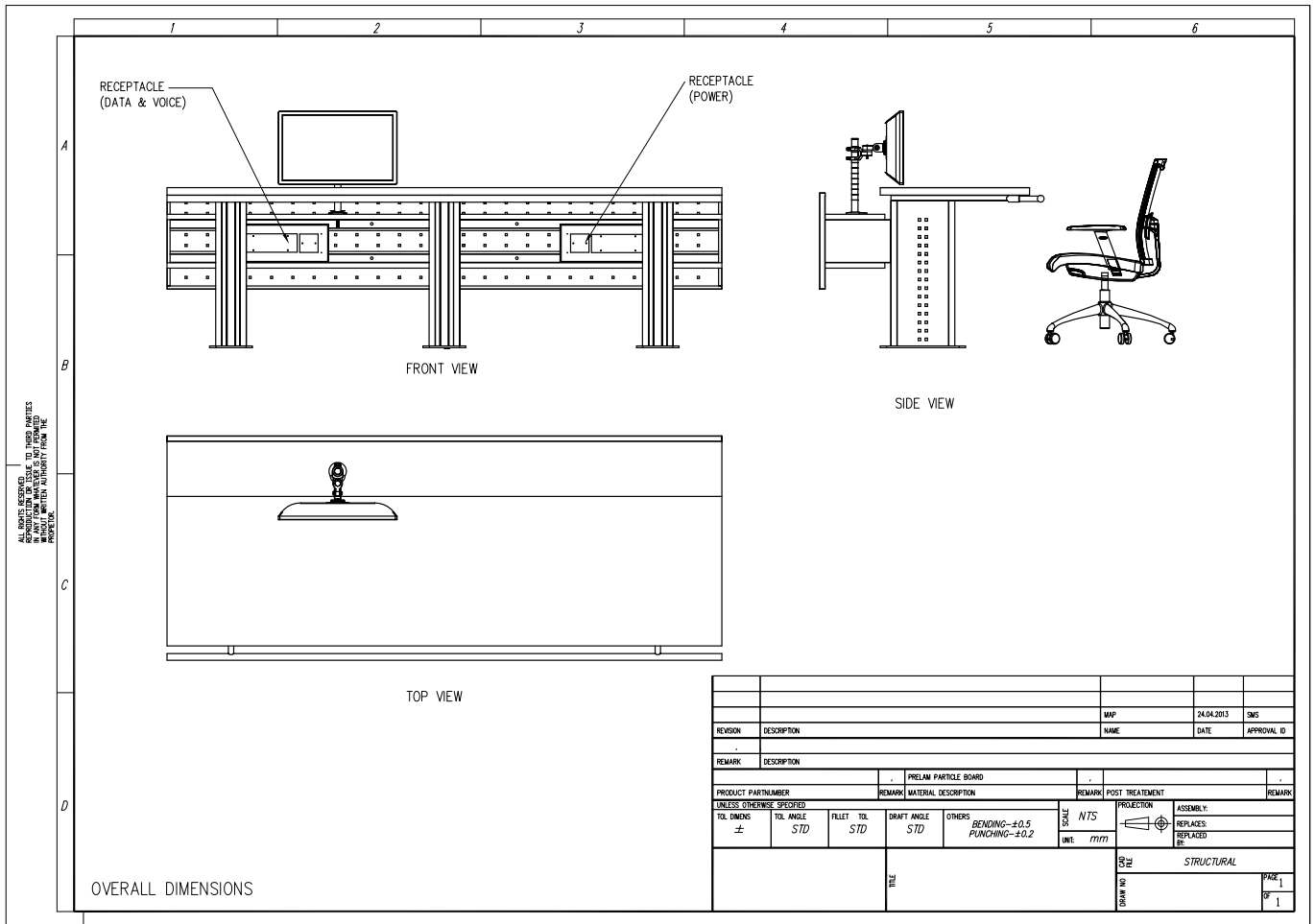


**On Board Consoles**

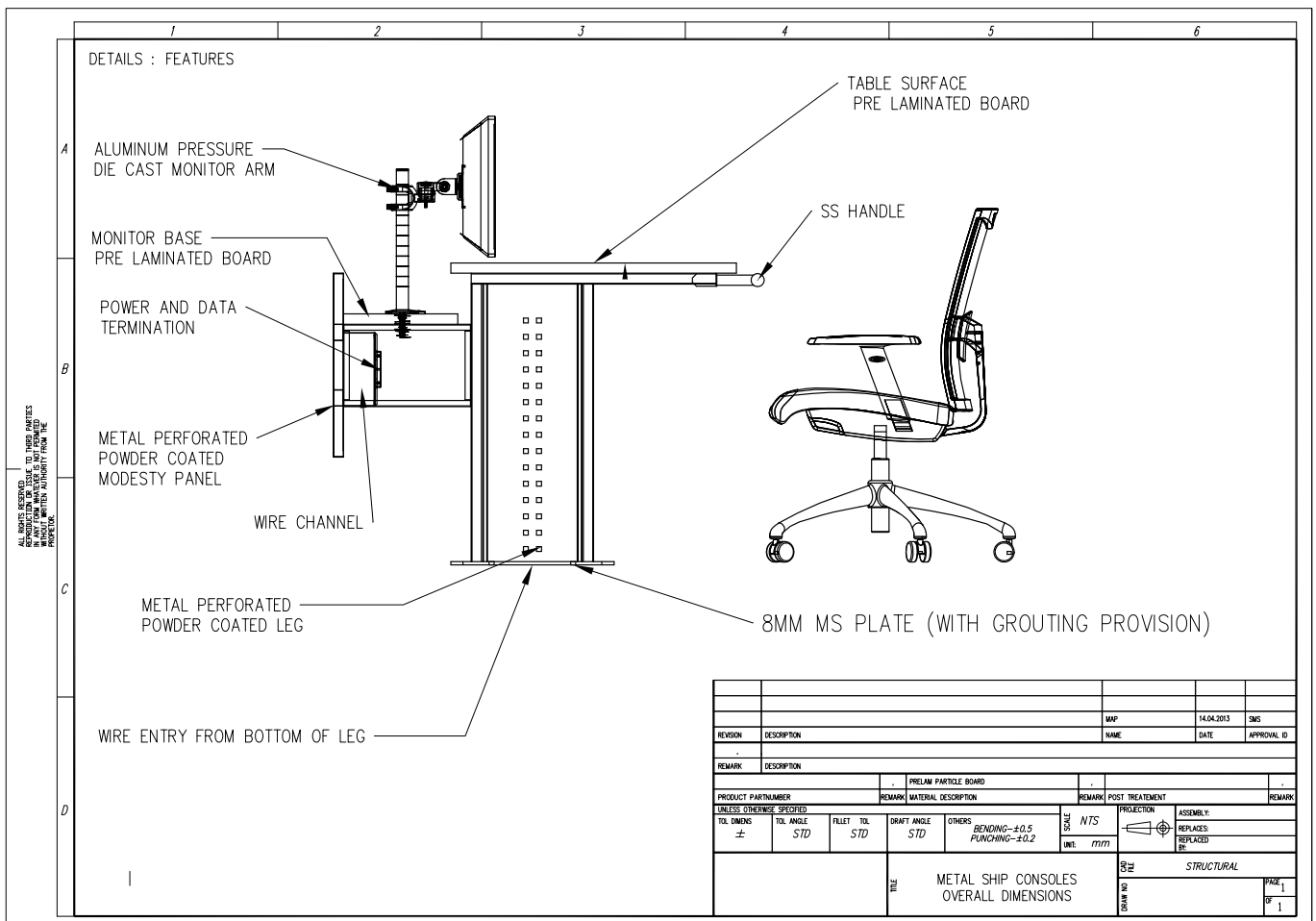
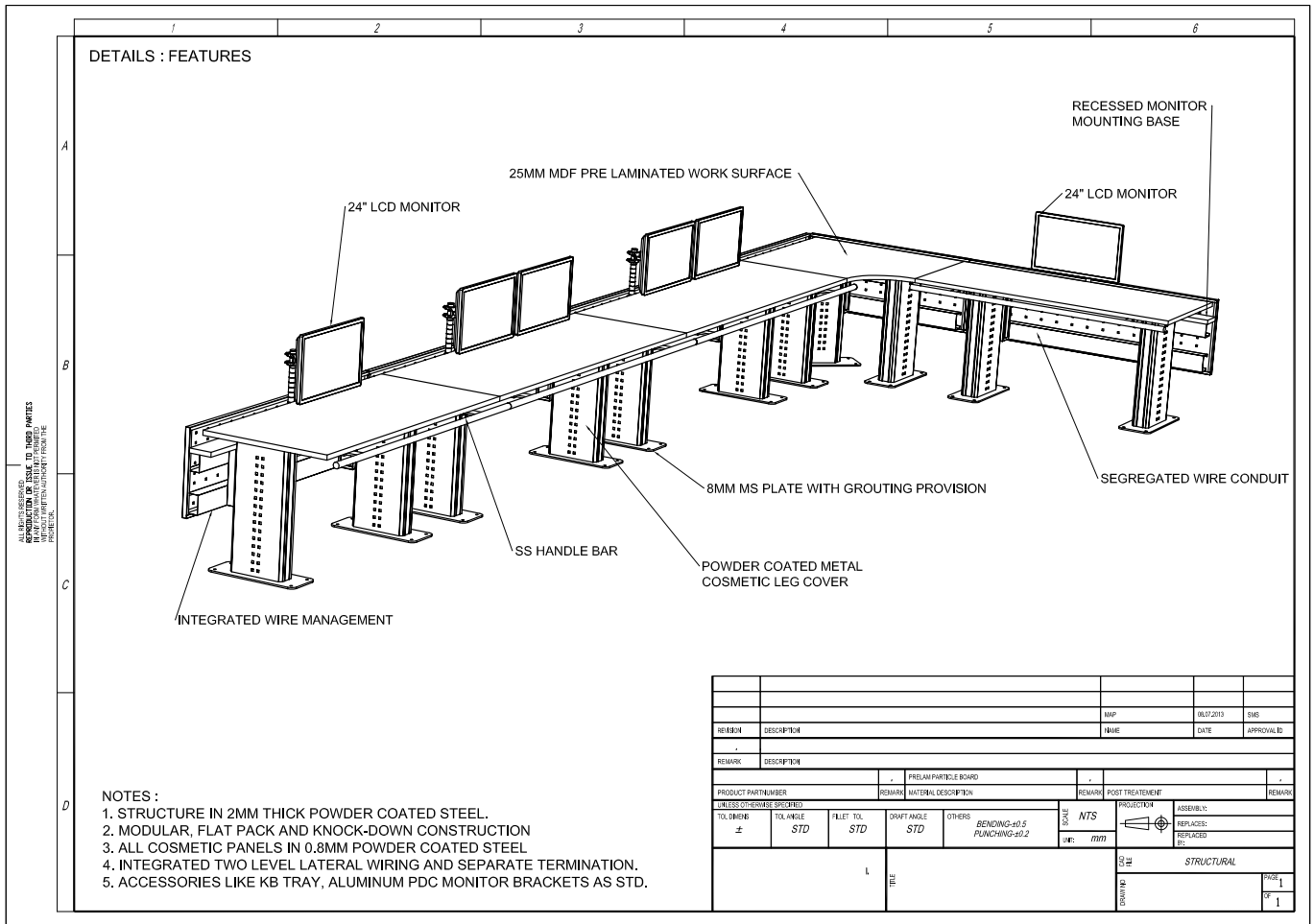












### Ultra Modern



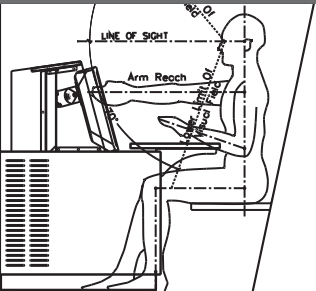
We believe that technical environments is no different from any other workspace when it comes to aesthetic appeal. Work environments need to be inspiring and should positively influence the morale and confidence of the operator in order to deliver performance. All our products are frequently updated to ensure that it matches with the changes in lifestyle and technology.

### State Of Art



We are obsessed with technology and constantly strive to update our products with the best in technology, materials and processes. We adopt the latest engineering tools for designing each and every part of our solution to ensure that they are optimized of the best performance.

### Human Centric



We believe that the best way to achieve operator performance is to respect human factors. Work environments should inspire the individual to uplift his morale and confidence. Our team has extensive knowledge in human factors engineering to ensure the products and solutions comply with the highest standards of ergonomics.

**TEQZO** Environments

Head Office :  
TEQZO Retail Products Private Limited  
No. 410, CMR Road, Kalyan Nagar,  
Bangalore 560043. INDIA.

Tel : +91 80 4121 8823  
Email : [enquiry@teqzo.com](mailto:enquiry@teqzo.com)  
URL : [environments.teqzo.com](http://environments.teqzo.com)

We are a company engaging in research, design, manufacture, supply and commission of products meant for technical interiors and environments. Our focus is on environments like control rooms, control centres, shop floors and other work environments.

We are an ISO 9001:2008 company. We have achieved substantial growth by servicing clients including governmental organizations and multi national companies both in India and abroad.

Contact us for more details.