

TEQZO Environments



Recessed Console - Modern

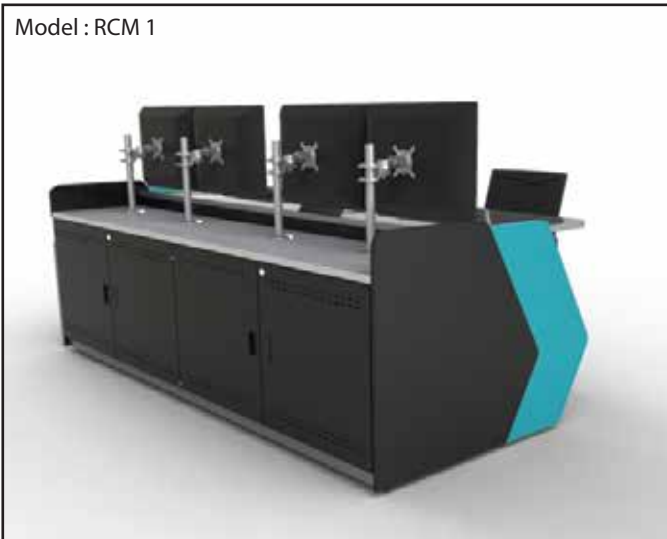
Features

- > Medium duty application
- > Pre-laminated MDF understructure
- > Recessed monitor placement
- > Cabinet for CPU storage
- > Inbuilt thermal management
- > Display mounted on flexible mounts
- > ISO 11064 compliant design
- > Ultra modern appearance



Models

Model : RCM 1



General Specification :

Recessed Consoles are typical control room consoles with recessed work-surface for display mounting.

Construction :

Recessed consoles are made of 18mm pre-laminated MDF and 2mm thick powder coated CRCA, with provision for rear as well as front opening. Cabinets are enclosed with metal shutters with magnetic lock and inbuilt ventilation. These consoles have retractable CPU shelf mounted on heavy duty slides.

Work Surface : All work surfaces are made of 25mm pre-laminated MDF, with optional 12mm thick acrylic overlay.

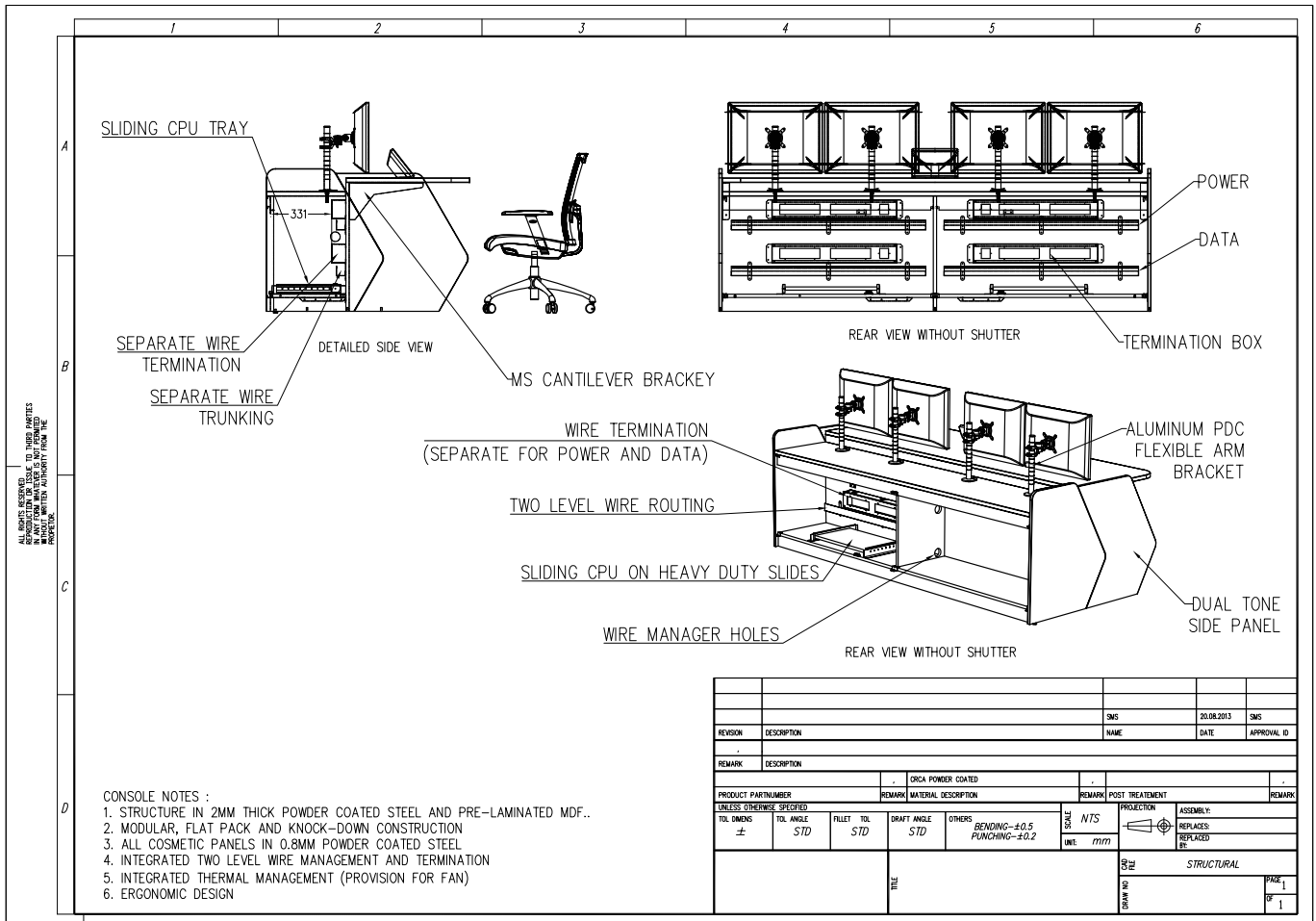
Wire Management : Recessed consoles have two levels of wire manager conduits along with power and data termination ports both within the cabinet. Internal wiring is done for forced cooling fans.

Storage Capacity : Equipments on the recessed-console can

be stored on the retractable shelf available inside the cabinet.

Finish : All metal items are powder-coated up to 50micron thickness to the desired shade. Shades of pre-laminated MDF can be selected from our standard colours and finishes.

Technical Details



Ultra Modern



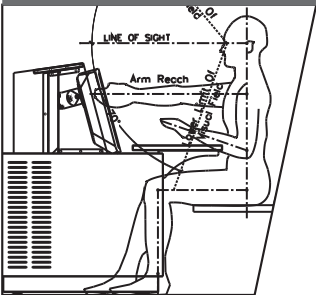
We believe that technical environments is no different from any other workspace when it comes to aesthetic appeal. Work environments need to be inspiring and should positively influence the morale and confidence of the operator in order to deliver performance. All our products are frequently updated to ensure that it matches with the changes in lifestyle and technology.

State Of Art



We are obsessed with technology and constantly strive to update our products with the best in technology, materials and processes. We adopt the latest engineering tools for designing each and every part of our solution to ensure that they are optimized of the best performance.

Human Centric



We believe that the best way to achieve operator performance is to respect human factors. Work environments should inspire the individual to uplift his morale and confidence. Our team has extensive knowledge in human factors engineering to ensure the products and solutions comply with the highest standards of ergonomics.

TEQZO Environments

Head Office :
TEQZO Retail Products Private Limited
No. 410, CMR Road, Kalyan Nagar,
Bangalore 560043. INDIA.

Tel : +91 80 4121 8823
Email : enquiry@teqzo.com
URL : environments.teqzo.com

Contact us for more details.

We are a company engaging in research, design, manufacture, supply and commission of products meant for technical interiors and environments. Our focus is on environments like control rooms, control centres, shop floors and other work environments.

We are an ISO 9001:2008 company. We have achieved substantial growth by servicing clients including governmental organizations and multi national companies both in India and abroad.