

TEQZO Environments



PRODUCTS 2014 - 15

About Us

We are a company engaging in research, design, manufacture, supply and commission of products meant for technical interiors and environments. Our focus is on environments like control rooms, control centres, shop floors and other work environments.

We are an ISO 9001:2008 company. We have achieved substantial growth by servicing clients including governmental organizations and multi national companies both in India and abroad.

Vision

Our vision is to be a leader in providing human centric technical furniture solutions that are ultra modern and state-of-art.

Commitment : Customer satisfaction, Quick response, Highest Quality

Trust : High performance , High economic value, Quick delivery

Value : Ultra Modern, State-of-art, Human centric

Core Strength

We have a strong background in human factors and ergonomics which are key to operator comfort and efficiency. Apart from these we have in-depth knowledge in technology, design and manufacturing.

Capabilities: R&D, Design, Manufacture, Supply & Commission.

Strategy

Leverage our core strength (ergonomics, functionality and aesthetics) by partnering with the like minded organisations to provide comprehensive solutions to end customers.

Differentiator : Ultra Modern, State-of-art, human centric

Products

Rack Mount Consoles, Cabinet Mount Consoles, Cabinet-Less consoles, Ultra Low Profile Consoles, High-Tech Consoles, Speciality Consoles - ATC Consoles, On-board Consoles, Command Centre Consoles, Data Centre Consoles, Machine Consoles, Video Walls (Bezel Type and Bezel-Less Type), NOC Furniture, Reception Furniture, Lecterns, Video Conferencing Furniture, Staff Work stations, Training Room Furniture's, Task Chairs, Custom Enclosures. We also develop custom built consoles according to the specification and drawings of the clients, tailor made to suite specific conditions and locations.

Clients

Few of our esteemed clients - Al -Sayed Contracting, Trading & Industry (KSA) , Al Imam University(KSA), Saudi Post (KSA), Mazail Al Khaleej (KSA), Gulf Networks (Qatar), Cisco (India), Diebold (India), Elcome Marine (India), Allied Digital (India), Taj Vivanta (India), Dept. of Light Houses and Light Ships (India), Power Grid Corporation of India (India), PMA Controls (India)



Recessed Console - Modern



ATC Console



On Board Console



Instrumentation Console



Video-wall - Bezel Less



Video-wall - Bezel Type



Slat-wall Console



Sleek Console



Recessed Console - Classic



Low Profile Console



Rack Mount Console



Command Console



Integrated Console



Printer storages



Ergonomic Chairs



Accessories

- > Medium duty application
- > Pre-laminated MDF understructure
- > Recessed monitor placement
- > Cabinet for CPU storage
- > Inbuilt thermal management
- > Display mounted on flexible mounts
- > ISO 11064 compliant design
- > Ultra modern appearance



Models

Model : RCM 1



General Specification :

Recessed Consoles are typical control room consoles with recessed work-surface for display mounting.

Construction :

Recessed consoles are made of 18mm pre-laminated MDF and 2mm thick powder coated CRCA, with provision for rear as well as front opening. Cabinets are enclosed with metal shutters with magnetic lock and inbuilt ventilation. These consoles have retractable CPU shelf mounted on heavy duty slides.

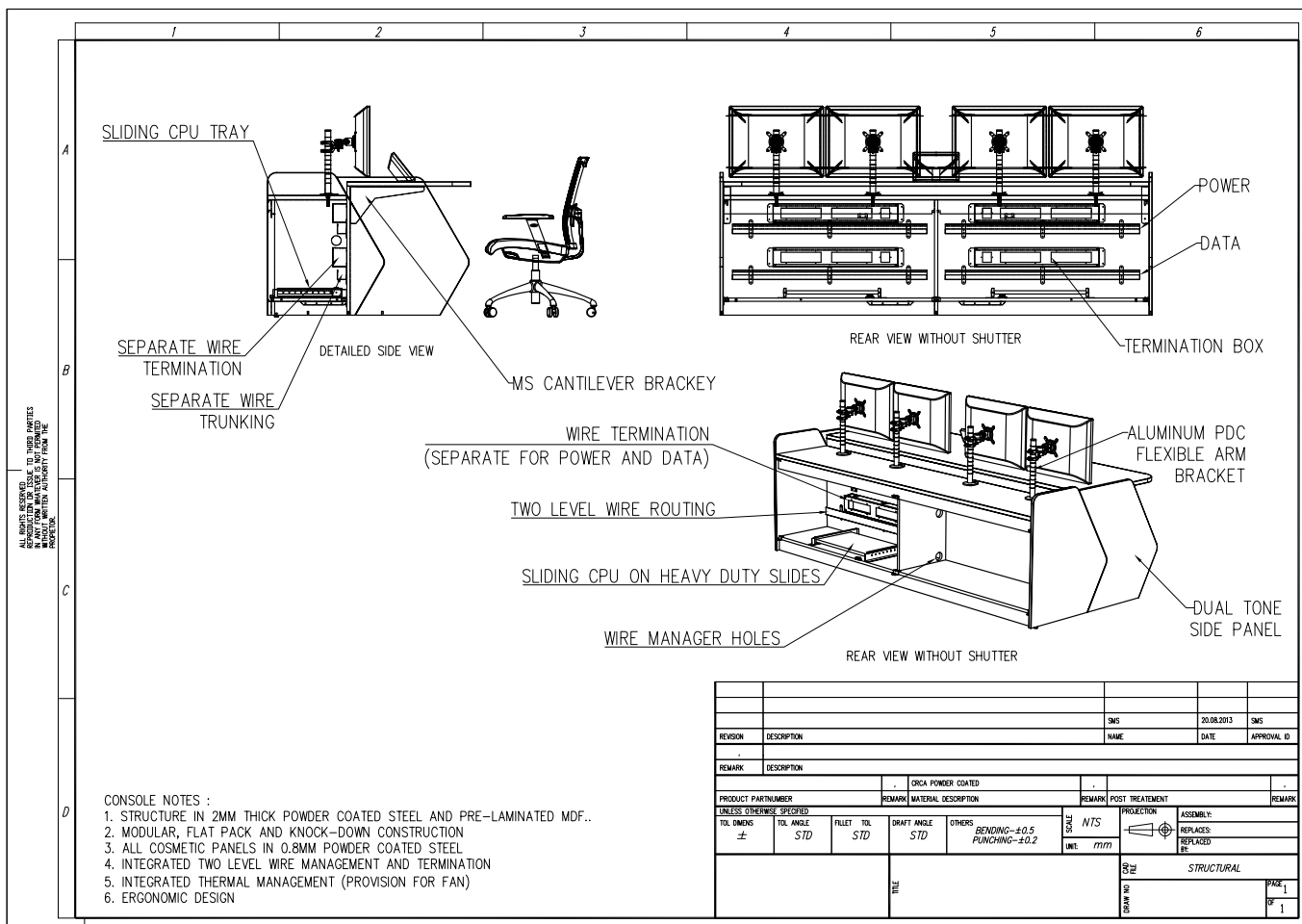
Work Surface : All work surfaces are made of 25mm pre-laminated MDF, with optional 12mm thick acrylic overlay.

Wire Management : Recessed consoles have two levels of wire manager conduits along with power and data termination ports both within the cabinet. Internal wiring is done for forced cooling fans.

Storage Capacity : Equipments on the recessed-console can be stored on the retractable shelf available inside the cabinet.

Finish : All metal items are powder-coated up to 50micron thickness to the desired shade. Shades of pre-laminated MDF can be selected from our standard colours and finishes.

Technical Details



- > As per IEC 60297/ DIN 41494
- > Modular (vertical & horizontal)
- > Knock-down design
- > Powder coated steel understructure
- > State-of-art automatic lift column
- > Sleek and Modern aesthetics.
- > ISO 11064 compliant design



Models

Model: ATCC-1



Model: ATCC-3



Model: ATCC - 2



General Specification :

ATC Consoles consist of modular slat wall partition with retractable rack mount cabinet and automatic height adjustable work surface.

Construction :

Modular slat wall partition is made of steel powder coated structure. Slat walls provide completely flexibility to hang monitors and other equipments. Retractable rack mount structure is a 14U 19" rack based module which is independent of the slat wall module. Work surface is mounted on an automatic dual column electronic system with touch controls and adequate safety features.

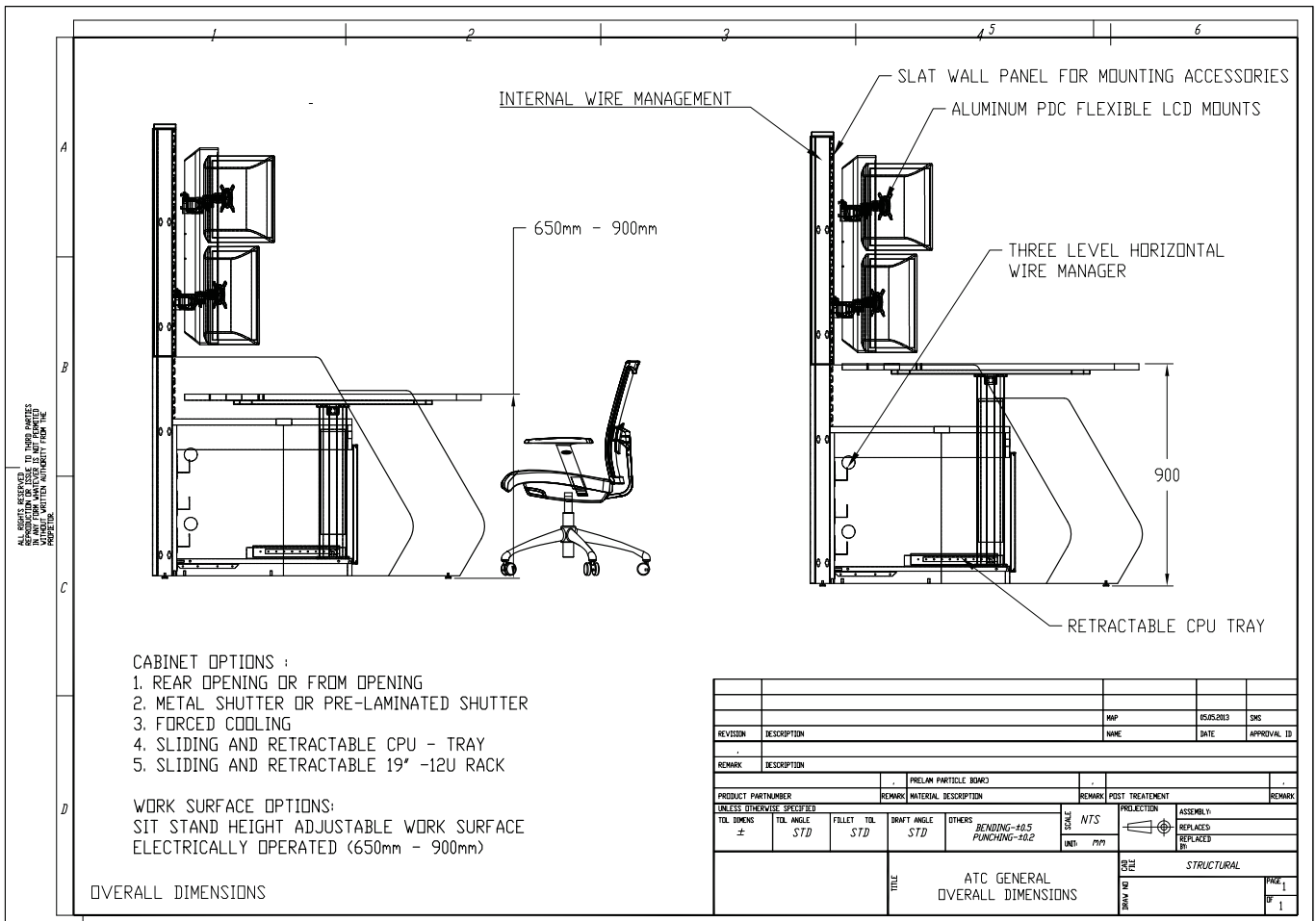
Work Surface : All work surfaces are made of 25mm (optional 35mm) pre-laminated MDF.

Wire Management : Slat wall partition of the ATC console have two levels of wire manager conduits along with power and data termination ports. Retractable rack mount structure will have its own termination ports.

Storage Capacity : Equipments on the ATC console can be stored in the retractable rack mount unit. Display elements like monitors can be fixed on the slat walls provided.

Finish : All metal items are powder-coated up to 50micron thickness to the desired shade. Shades of pre-laminated MDF can be selected from our standard colours and finishes.

Technical Details



- > As per IEC 60297/ DIN 41494
- > Modular construction
- > Knock-down design
- > Floor grouting for on-board mounting
- > Ergonomic on-board handle bar
- > Powder coated GI steel construction
- > Multi-tier monitor mounting
- > Integrated wire management
- > Heavy duty application
- > High on Aesthetics



Models

Model: OBC - 1



Model : OBC - 2



Model : OBC - 3



General Specification :

On-board consoles are modular, knock-down and floor mounted units which can be joined to develop any desired layout for on-board application.

Construction :

On-board consoles are built using powder coated GI steel. Understructure is made of 2mm tubular sections with 1mm thick outer panels secured with screws. Understructure can be grouted firmly to the floor. Ergonomic stainless steel handle bar is an integral part of the console. On-board consoles can be fitted with multi-tier monitor systems. CPU and other equipments can be stored below the consoles.

Work Surface : All work surfaces are made of 25mm (optional 35mm) marine grade pre-laminat-

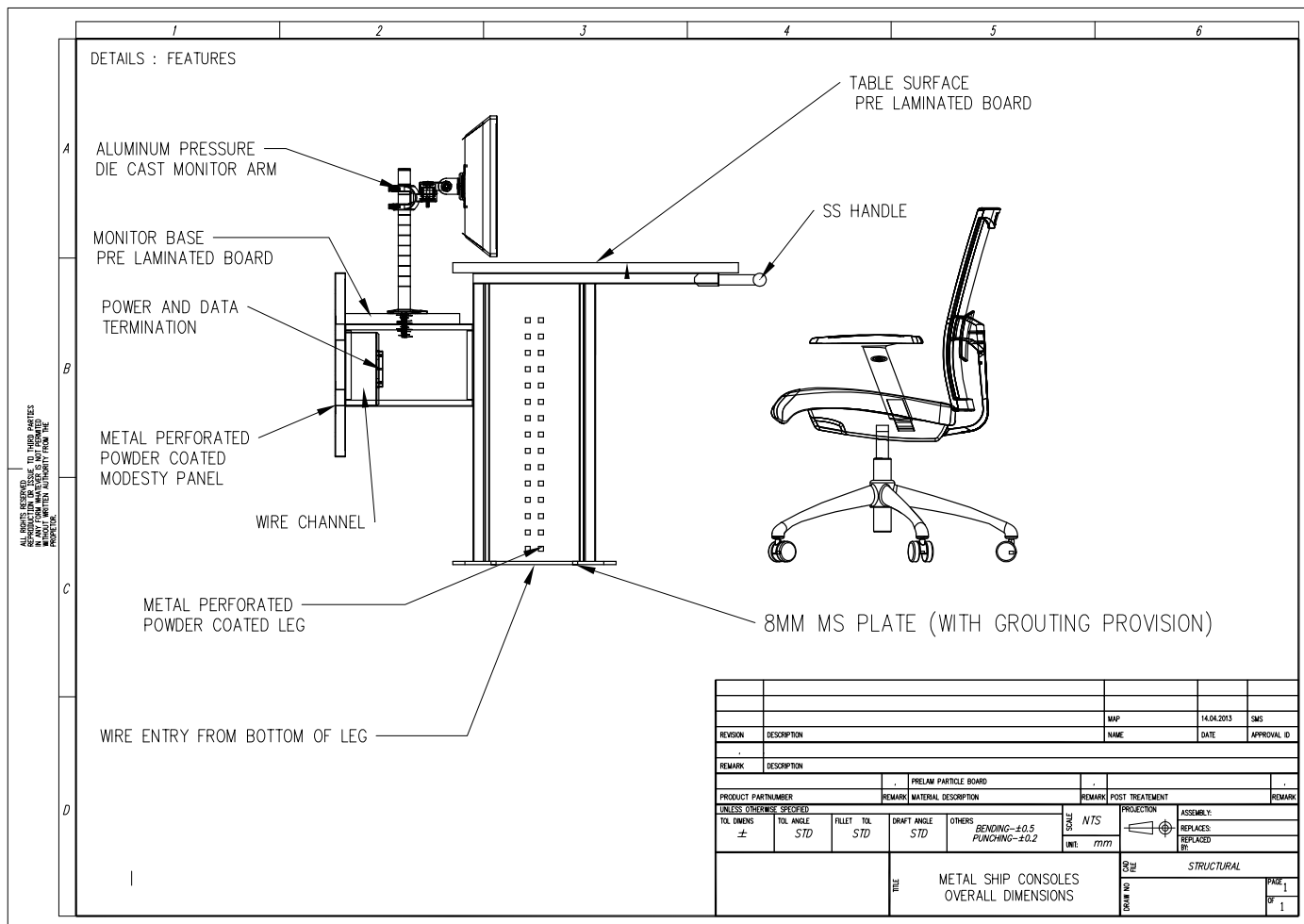
ed MDF. Secondary monitor mounting base is also made of similar material.

Wire Management : On-board consoles have two level wire management conduits to channel power and data cables. Power and data termination modules are also available between the conduits.

Storage Capacity : On-board consoles have limited storage facility as the CPU and other equipments are expected to be stored in mounting racks. However, leg based accessories are available to store additional equipments.

Finish : All metal items are powder-coated up to 50micron thickness to the desired shade. Shades of pre-laminated MDF can be selected from our standard colours and finishes.

Technical Details



- > As per IEC 60297/ DIN 41494
- > Heavy Duty construction
- > Powder coated steel understructure
- > Integrated display infrastructure
- > Large equipment capacity
- > ISO 11064 compliant design
- > Ideal for research centres
- > Inbuilt thermal management
- > Display up to 32" LCD possible.



Models

Model: INC-1

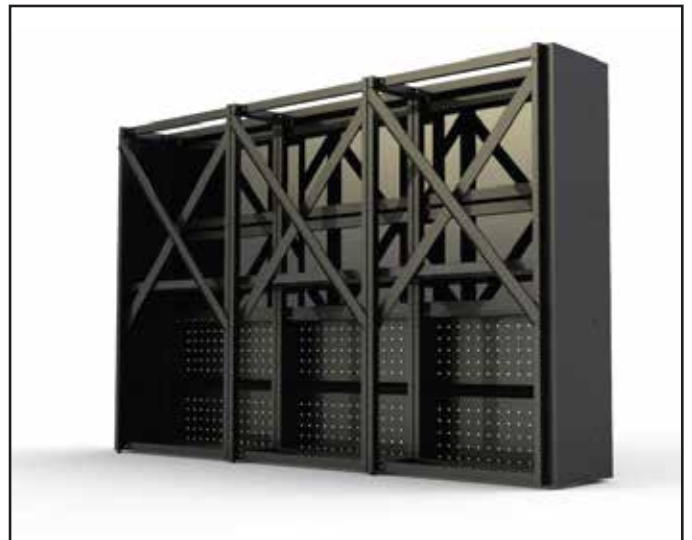
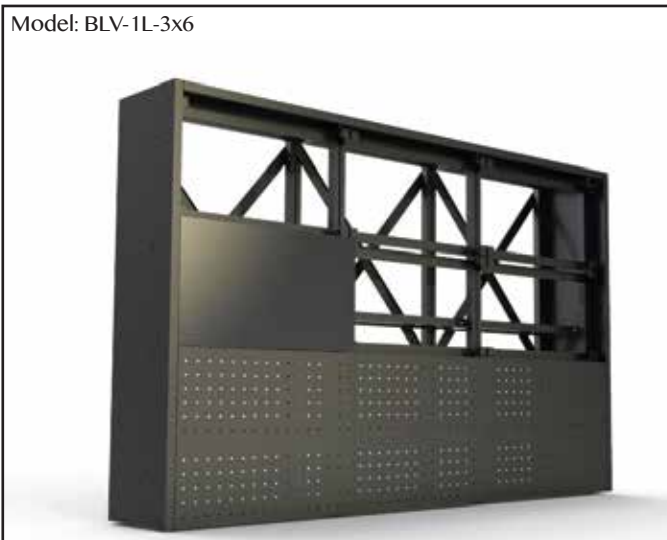


- > As per IEC 60297/ DIN 41494
- > Modular (vertical & horizontal)
- > Knock-down design
- > Powder coated steel structure
- > Curved and Straight options
- > Sleek and Modern aesthetics
- > Quick Installation
- > Provision for fine adjustments

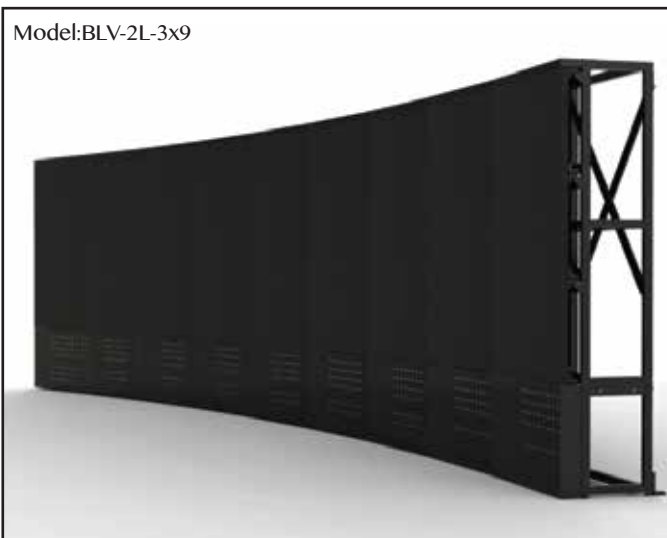


Models

Model: BLV-1L-3x6



Model: BLV-2L-3x9



General Specification :

Bezel Less Video Wall structure are floor mounted structure that consist of modular elements that could be configured in linear as well as curved orientation in any required matrix.

Construction :

All structural elements are made of modular, knock-down parts constructed out of 2.5mm thick powder coated steel machined to extream accuracy. Connecting elements are precision machined out of stainless steel. All cosmetic elements are made of 0.8mm thick powder coated steel.

Sizes : Bezel Less Video wall is tailor made to suite specific model of the display and the required matrix, either in linear format or in curvilinear

format. Individual display can be planned to be oriented in landscape as well as in portrait format.

Wire Management : Bezel Less video wall have inbuilt wiremanagement conduits and termination ports behind the structure.

Accuracy : Bezel Less video wall structures are built for extream accuracies. The structure can absorb floor level unevenness of up tp 20mm. Gap between the displays can be adjusted to 0.5mm. Provision for fine tuning is available for both horizonatal (+/-) 10mm as well as for vertical alignment (+/-) 3mm.

Finish : All metal items are powder-coated up to 50micron thickness to the desired shade.

Technical Details

The technical drawing includes the following components:

- LCD POSITION FINE TUNING:** Shows 6mm VERTICAL ADJUSTMENT (DETAIL A) and 10mm HORIZONTAL ADJUSTMENT (DETAIL B).
- TOP VIEW:** Shows the structure from above with a 10mm gap between units.
- REAR VIEW:** Shows the back of the structure with 'NEC' labels on the display units.
- FRONT VIEW:** Shows the front of the structure.
- SIDE VIEW:** Shows the side profile with a height dimension of 667mm and a detail callout 'DETAIL A'.
- FRONT ISOMETRIC VIEW:** Two isometric views showing the 3D structure.
- BILL OF QUANTITIES:**
 - MAIN-FRAME X 4
 - FRAME BRACKET TOP X 6
 - FRAME BRACKET BOTTOM X 2
 - LCD-BRACKET BOTTOM X 12
 - LCD-BRACKET TOP X 12
 - FLOOR ANCHOR BRACKET X 4
 - CROSS BAR X 12
- NOTE:** ALL DIMENSIONS ARE IN MM.
- Table:**

APPROVED BY	SMS	WOOD FINISH	TO BE SPECIFIED BY CLIENT	APPROVED BY	TO BE FILLED BY CLIENT
CHECKED BY	SMS	POWDER COATING	TO BE SPECIFIED BY CLIENT	SIGN	
DRAWN BY	AW	OTHER FINISH	TO BE SPECIFIED BY CLIENT	DATE	15-04-2013
TITLE				CLIENT :	
				DRAWN BY	PAGE 1 OF 1

- > Modular and Knock-down design
- > Linear slat wall panel to hang display
- > Integrated wire management
- > More privacy & more flexibility
- > Integrated wire management
- > Inbuilt thermal management
- > Pin-up board and writing board
- > High on Aesthetics
- > Designed as per ISO 11064



Models

Model: SWC-1



General Specification :

Slat wall consoles are modular cabinet type consoles with heavy duty aluminium slat-wall partition as an integral part of the consoles. Slat-walls can hang displays and other accessories.

Construction :

Slat-wall consoles are constructed using 75mm thick slat-wall partition and 18mm thick pre-laminated MDF cabinet. Slat wall extrusions are made of 2mm thick aluminium alloy 6063T6 powder coated with up to 50micron thickness. Other partition structure is made of 2mm thick powder coated CRCA. Partition has inbuilt pin-up and writing board apart from internal wiring. Cabinet is constructed using 18mm pre-laminated MDF using modular fittings. Cabinet has metal powder coated shutters with heavy duty CPU pull out tray.

Work Surface : All work surfaces are made of 25mm pre-laminated MDF with high scratch resistance, seamless joints, flammability –class A and non porous and edges covered with 2mm edge-band.

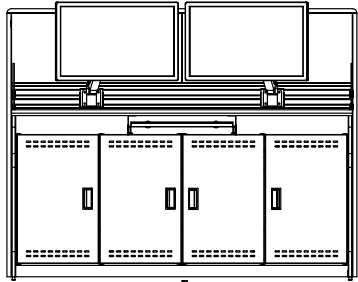
Wire Management : Slat wall consoles have continuous two level wire management conduits to channel power and data cables. Power and data termination modules are also available between the conduits.

Storage Capacity : Slat-wall consoles have storage facility for CPU and other equipments within the cabinet.

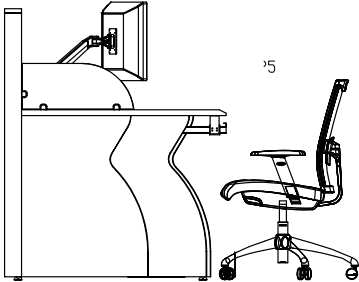
Finish : All metal items are powder-coated up to 50micron thickness to the desired shade. Shades of pre-laminated MDF can be selected from our standard colours and finishes.

Technical Details

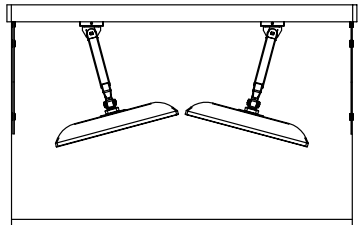
123456



FRONT VIEW



SIDE VIEW



TOP VIEW

NOTES :

- STRUCTURE IN 2MM THICK POWDER COATED STEEL & PRE LAMINATED MDF.
- MODULAR, FLAT PACK AND KNOCK-DOWN CONSTRUCTION
- ALL COSMETIC PANELS IN 0.8MM POWDER COATED STEEL
- INTEGRATED TWO LEVEL LATERAL WIRING AND SEPARATE TERMINATION
- ACCESSORIES LIKE KB TRAY, ALUMINUM PDC MONITOR BRACKETS AS STD.

REVISION		DESCRIPTION		WAP	2016-01-03	SMS
REMARK		DESCRIPTION		NAME	DATE	APPROVAL ID
PRODUCT PARTNUMBER		PRELIM PARTICLE BOARD		REMARK		POST TREATMENT
TOL. DIMENS ±	TOL. ANGLE STD	FILLET TOL STD	DRAFT ANGLE STD	OTHERS	BENDING-40.5 PUNCHING-30.2	WTS
UNIT: mm			PROJECTION		ASSEMBLY	
TITLE			REPLACED BY		REPLACED BY	
			STRUCTURAL		PAGE 1 OF 1	

ALL RIGHTS RESERVED. NO PARTS OR MATERIALS IN ANY FORM OR MANNER MAY BE REPRODUCED OR TRANSMITTED IN ANY FORM OR BY ANY MEANS WITHOUT AUTHORITY FROM THE PROPRIETOR.

- > Modern, sleek and elegant
- > Complete metal understructure
- > Hanging CPU and wire management
- > Light duty application
- > Modular and Knock-down design
- > Integrated wire management
- > More privacy
- > High on Aesthetics
- > Designed as per ISO 11064



Models

Model: SLC-1



General Specification :
Sleek Console is a type of control room console that are modern, sleek and elegant.

Construction :
Sleek consoles are single built units that are modular and knock-down. Understructure is completely metallic with 2 inch tubular legs with metal embossed modesty panel.

Work Surface : All work surfaces are made of 25mm pre-laminated MDF with high scratch resistance, seamless joints, flammability –class A and non porous and edges covered with 2mm edge-band.

Wire Management : Sleek consoles have simple wire management clips underneath the work surface to channel power and data cables. Power

and data termination ports are fixed underneath the work surface.

Storage Capacity : Sleek consoles have limited storage facility for CPU.

Finish : All metal items are powder-coated up to 50micron thickness to the desired shade. Shades of pre-laminated MDF can be selected from our standard colours and finishes.

Technical Details

NOTES :

1. STRUCTURE IN 2MM THICK POWDER COATED STEEL & PRE LAMINATED MDF.
2. MODULAR, FLAT PACK AND KNOCK-DOWN CONSTRUCTION
3. ALL COSMETIC PANELS IN 0.8MM POWDER COATED STEEL
4. INTEGRATED TWO LEVEL LATERAL WIRING AND SEPARATE TERMINATION
5. ACCESSORIES LIKE KB TRAY, ALUMINUM PDC MONITOR BRACKETS AS STD.
6. CPU STORAGE - HANGING TYPE BRACKET

REVISION	DESCRIPTION	WIP	20/02/2013	DNF
		NAME	DATE	APPROVAL ID
REMARK	DESCRIPTION			
PRODUCT PART NUMBER	PRELIM PART/LEAD BOARD	REMARK	POST TREATMENT	
TOL DIMENS ±	TOL ANGLE STD	FILLET TOL STD	DRAFT ANGLE STD	OTHERS BENDING=40.5 PUNCHING=0.2
SCALE	NTS	UNIT	MM	
TITLE	STRUCTURAL	DATE		
DRAWN BY		CHECKED BY		PAGE 1 OF 1

Features

Recessed Console - Classic

- > Medium duty application
- > Pre-laminated MDF understructure
- > Recessed monitor placement
- > Cabinet for CPU Storage
- > Integrated task light
- > Acrylic overlay on work surface
- > Inbuilt thermal management
- > Display mounted on flexible mounts
- > ISO 11064 compliant design

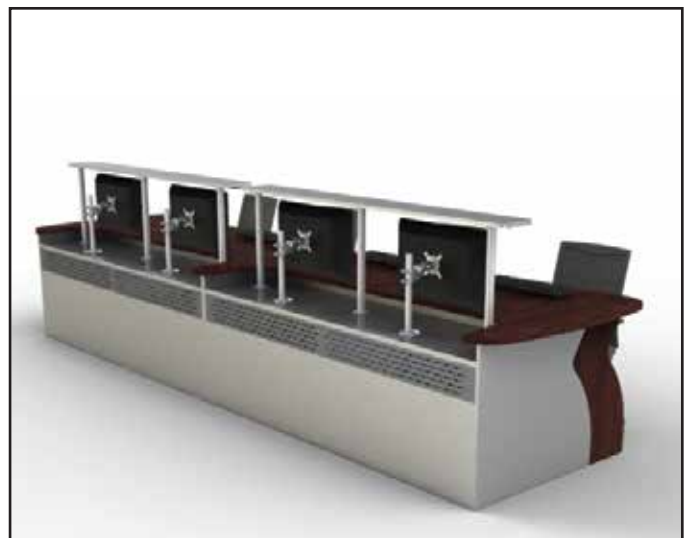


Models

Model: RCC1



Model: RCC2



General Specification :

Recessed Consoles are typical control room consoles with recessed work-surface for display mounting and integrated task lights.

Construction :

Recessed consoles are made of 18mm pre-laminated MDF and 2mm thick powder coated CRCA, with provision for rear as well as front opening. Cabinets are enclosed with metal shutters with magnetic lock and inbuilt ventilation. These consoles have retractable CPU shelf mounted on heavy duty slides.

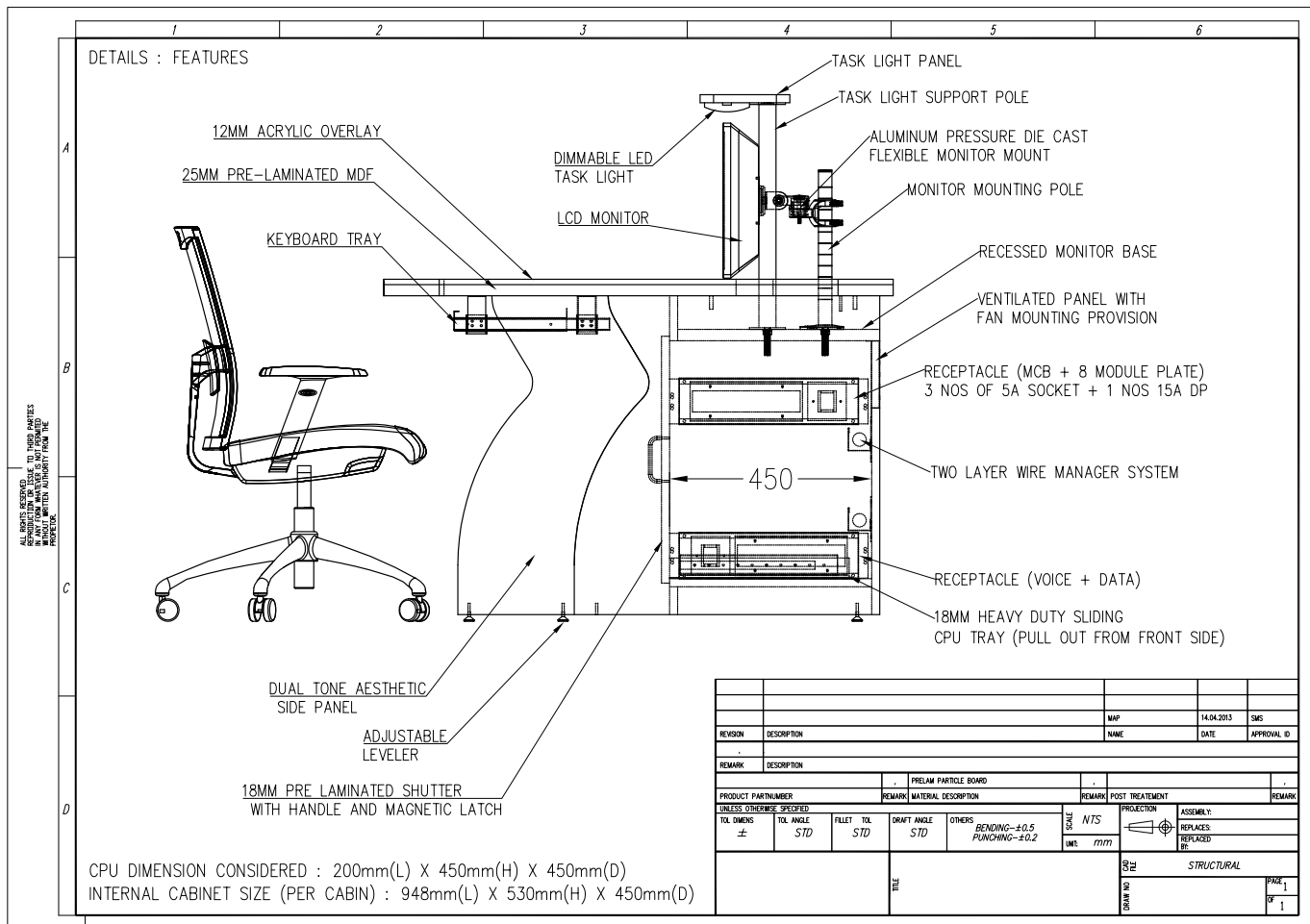
Work Surface : All work surfaces are made of 25mm pre-laminated MDF, with optional 12mm thick acrylic overlay.

Wire Management : Recessed consoles have two levels of wire manager conduits along with power and data termination ports both within the cabinet. Internal wiring is done to the task lighting and forced cooling fans.

Storage Capacity : Equipments on the recessed-console can be stored on the retractable shelf available inside the cabinet.

Finish : All metal items are powder-coated up to 50micron thickness to the desired shade. Shades of pre-laminated MDF can be selected from our standard colours and finishes.

Technical Details



- > As per IEC 60297/ DIN 41494
- > Modular construction
- > Knock-down design
- > Powder coated steel shutters
- > Multiple monitor mounting
- > Integrated wire management
- > Medium duty application
- > Dual tone side panel
- > High on Aesthetics



Models

Model: LPC1



Model: LPC2



Model: LPC3



Model: LPC4



General Specification :

Low Profile consoles are cabinet mount consoles that are modular, knock-down units which can be joined to developed any desired layout for medium duty control room application.

Construction :

Low Profile Console cabinets are constructed using 18mm thick pre-laminated MDF and 2mm thick powder coated steel. Cabinets have provision for front or rear opening to access the equipments. Cabinet are enclosed with 0.8mm thick powder coated metal shutters with louvres for ventilation. Provision for forced cooling is integral to all shutters. CPU and other equipments can be stored below the consoles.

Work Surface : All work surfaces are made of

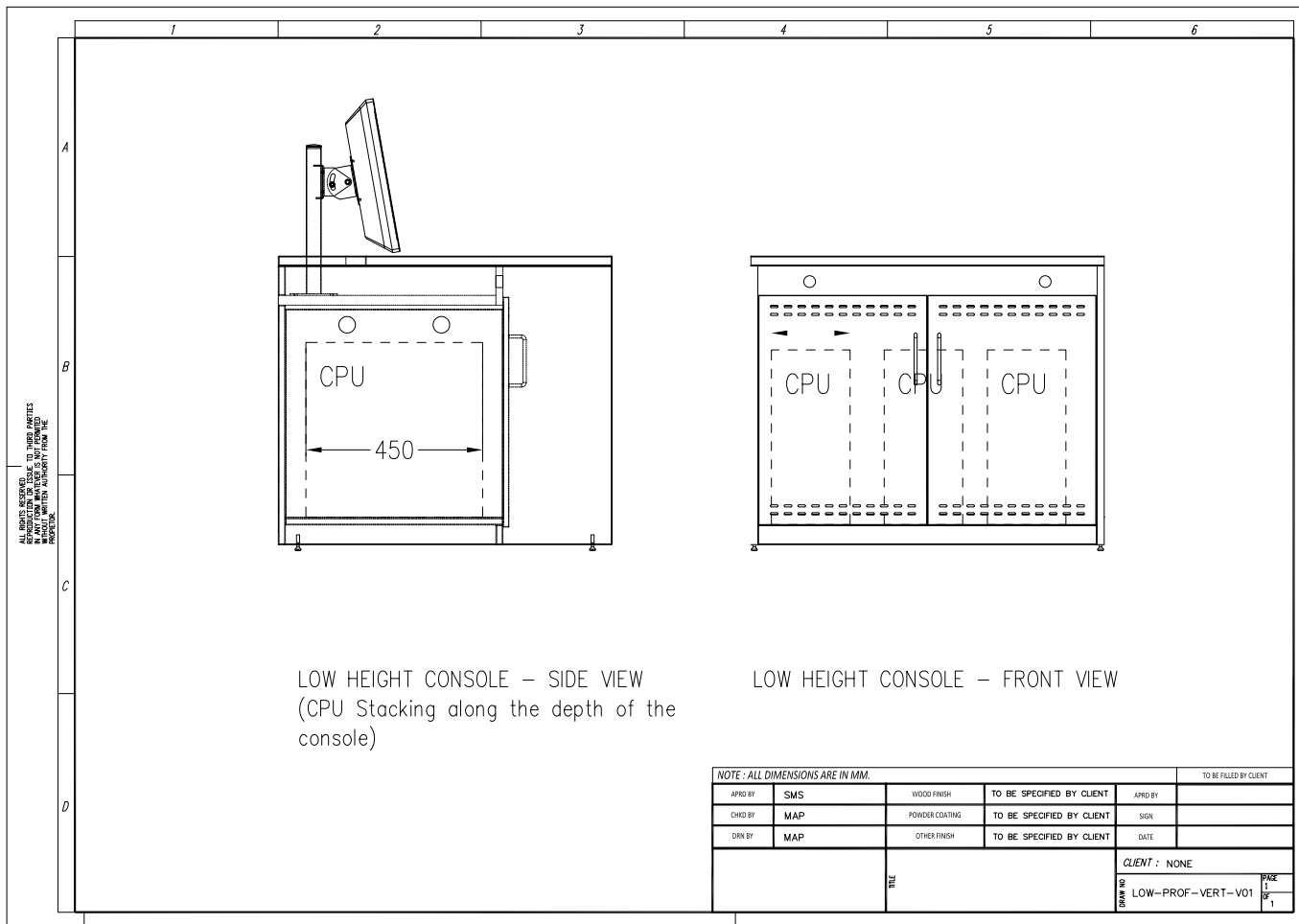
25mm (optional 35mm) pre-laminated MDF.

Wire Management : Low profile consoles have continuous two level wire management conduits to channel power and data cables. Power and data termination ports are also available between the conduits. Work surfaces have integrated wire management grommets.

Storage Capacity : Low profile consoles have moderate storage facility. Regular CPU and other light duty equipments can be stored within the cabinet.

Finish : All metal items are powder-coated up to 50micron thickness to the desired shade. Shades of pre-laminated MDF can be selected from our standard colours and finishes.

Technical Details



- > As per IEC 60297/ DIN 41494
- > Modular construction
- > Knock-down design
- > Powder coated steel shutters
- > Multiple monitor mounting
- > Integrated wire management
- > Heavy duty application
- > Dual tone side panel
- > High on Aesthetics



Models

Model:RMC1



Model:RMC2



Model:RMC3



Model:RMC4



General Specification :

Rack Mount consoles are heavy duty fully metal consoles which has 19" type 14U rack mount capacity below the work space.

Construction :

Rack mount unit is constructed using 2mm thick CRCA framework with 0.8mm thick outer panel. It has front and rear open-able metal shutters with magnetic latch and optional lock. Shutters can be with clear acrylic window or with natural ventilation to forced cooling ventilation.

Work Surface : All work surfaces are made of 25mm pre-laminated MDF.

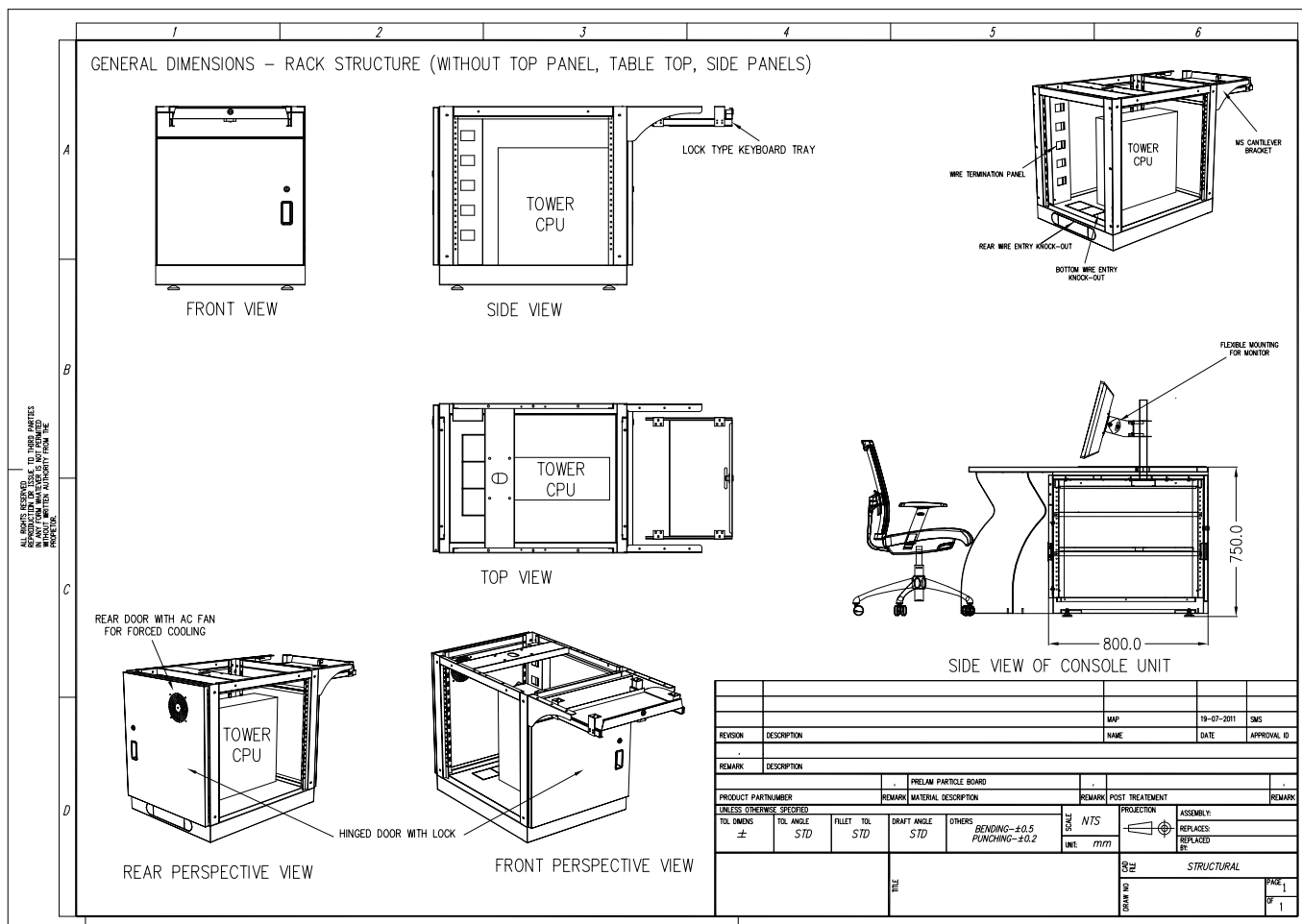
Wire Management : Rack mount consoles have two levels of wire manager conduits along with

power and data termination ports.

Storage Capacity : Rack mount consoles have 14U rack mount capacity at the lower portion of each unit. Each rack mount storage is equipped with a retractable CPU storage rack with heavy duty slides.

Finish : All metal items are powder-coated up to 50micron thickness to the desired shade. Shades of pre-laminated MDF can be selected from our standard colours and finishes.

Technical Details



- > As per IEC 60297/ DIN 41494
- > Rugged construction
- > Powder coated finish
- > Multiple monitor mounting
- > Integrated wire management
- > Heavy duty application
- > High on Aesthetics



Models

Model : Custom



General Specification :

Command consoles are tailor made metal consoles made of suite customer specifications.

Construction :

Basic skeletal structure is made of 2mm thick CRCA powder coated to 50micron thickness. Outer panels are constructed using 1mm thick removable steel powder coated panels.

Thermal Management : Command console have inbuilt thermal management provision using a combination of ventilation and force cooling.

Wire Management : Command consoles have integrated wire-management both vertical and horizontal. Instrument panels are wired separately and mounted on the console.

Storage Capacity : Upper deck of the command console can accommodate up to 3 X 400mm rack mount sub unit. Each command console have inbuilt 14U x800mm storage unit with rear opening metal shutter. Apart from rack mount equipments provision for two display modules (21" LCD, 10" LCD) are available in the console. Control panel of size 550 x 350 mm is available for customisation.

Finish : All metal items are powder-coated up to 50micron thickness to the desired shade. Shades of pre-laminated MDF can be selected from our standard colours and finishes.

Technical Details

ALL RIGHTS RESERVED. NO PARTS MAY BE REPRODUCED OR TRANSMITTED IN ANY FORM OR BY ANY MEANS WITHOUT PERMISSION FROM THE PROPRIETOR.

CONSOLE 1 - REAL TIME
 1. CDT (3U X 400)
 2. 20.1" DISPLAY (8U RACK MOUNTABLE)
 3. 10" TOUCH SCREEN
 4. HARD SWITCHES, ENCODERS AND JOYSTICK.
 5. 10U SUB RACK

CONSOLE 2 - OFF LINE
 1. UDT
 2. 17" DISPLAY (8U RACK MOUNTABLE)
 3. INTERCOM
 4. AREA FOR KEYBOARD TRAY
 5. SPACE FOR 6U SUB RACK

SCALE 0.1
SIDE VIEW

REVISION	DESCRIPTION	NAME	DATE	APPROVAL ID

PRODUCT PARTNUMBER	REMARK	MATERIAL DESCRIPTION	REMARK	POST TREATMENT	REMARK

TOL DIMENS	TOL ANGLE	FILLET TOL	DRAFT ANGLE	OTHERS	SCALE	UNITS	PROJECTION	ASSEMBLY
±					1:1000	MM		

TITLE	DATE	BY	CHKD	APPD	PAGE	OF
					1	1

- > As per IEC 60297/ DIN 41494
- > Heavy Duty construction
- > Powder coated steel understructure
- > Integrated display infrastructure
- > Up to 14U rack mount capacity
- > ISO 11064 compliant design
- > Ideal for compact control rooms
- > Inbuilt thermal management
- > Display up to 50" LCD possible.



Models

Model: IC1



General Specification :

Integrated consoles are unique type of console that integrates rack mount unit and rear side display infrastructure.

Construction :

Rack mount unit is constructed using 2mm thick CRCA framework with 0.8mm thick outer panel. It has front and rear open-able metal shutters with magnetic latch and optional lock. Shutters can be with clear acrylic window or with natural ventilation to forced cooling ventilation. Display infrastructure is made of 2mm thick tubular structure with 0.8mm thick outer panels. The display infrastructure holds flexible mounts to hold from simple 21" LCD to up to 50" LCD or a combination of both.

Work Surface : All work surfaces are made of 25mm

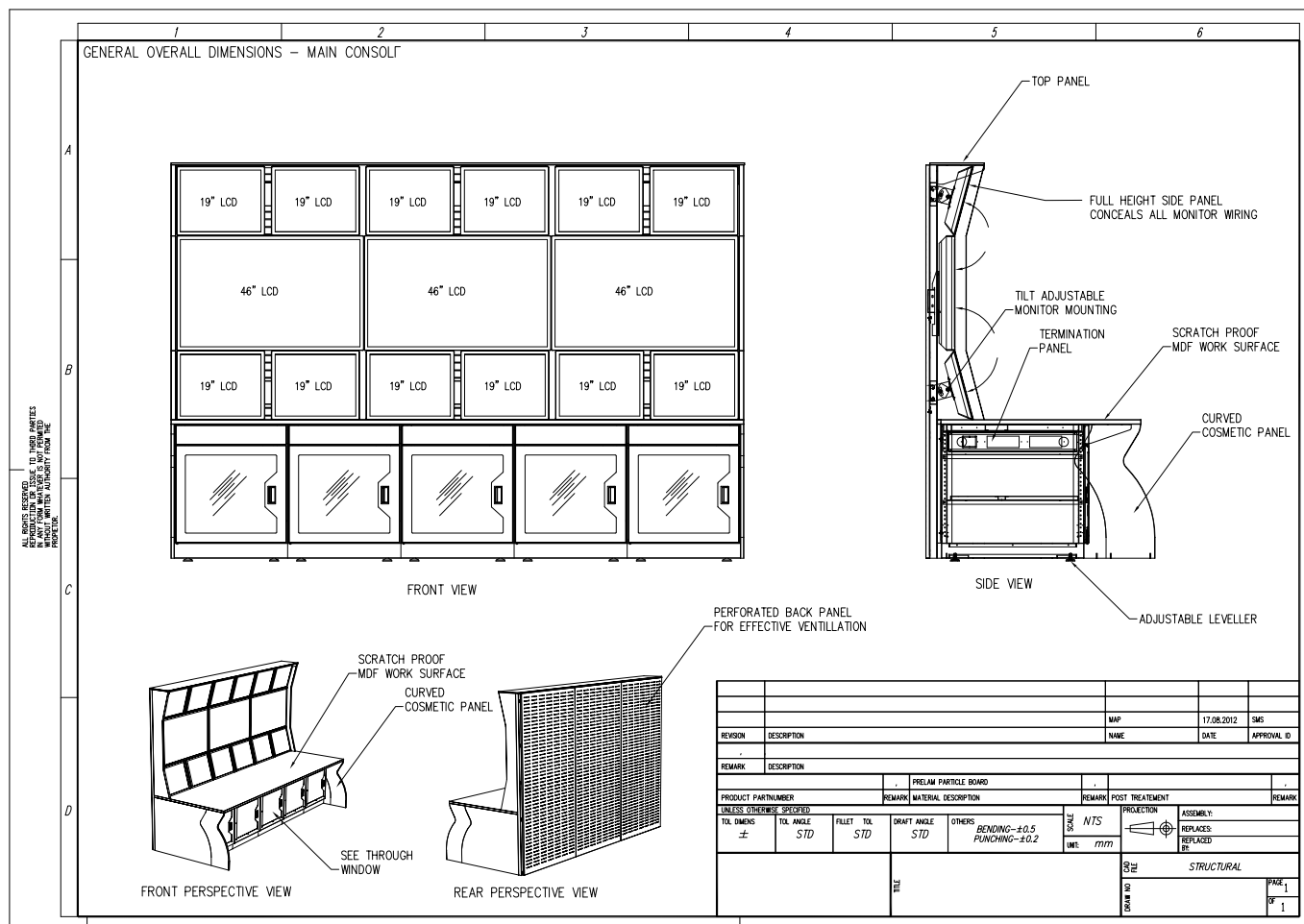
pre-laminated MDF.

Wire Management : Integrated consoles have two levels of wire manager conduits along with power and data termination ports both within the cabinet as well as within the display infrastructure.

Storage Capacity : Equipments on the Integrated console can be stored in the rack mount unit.

Finish : All metal items are powder-coated up to 50micron thickness to the desired shade. Shades of pre-laminated MDF can be selected from our standard colours and finishes.

Technical Details



- > Modular construction
- > Knock-down design
- > Adjustable shelves
- > Provision for rack mount devices
- > Provision for tinted windows
- > Provision for lock
- > Powder coated metal shutters
- > Integrated wiring
- > Plastic recesses handles



Models

Model: ST1



Model: ST3



Model: ST2



Model: ST4



General Specification :

Pre-laminated MDF storages with metal shutter. Option of pre-laminated MDF shutter also available. Drawers are available in 2D1F(Two Drawer, One filing), 3D (Three Drawer), 2F (Two Filing). Special printer storages are available with rack mount partitioning.

Construction :

Storages body are constructed using 18mm pre-laminated MDF using knock-down construction. Shutter could be metal powder coated or pre-laminated MDF.

Wire Management : Printer storages have integrated wire management for power and data. Termination of the same is possible within the unit.

Storage Capacity : Drawer units will have capacity as per the configuration. For printer storage, adjustable shelving for stationary is possible. Additionally, rack mounting accessories are available for light duty mounting.

Finish : All metal items are powder-coated up to 50micron thickness to the desired shade. Shades of pre-laminated MDF can be selected from our standard colours and finishes.

Specials : Tailor made storages both for basic application as well as for printer storages can be provided.

Technical Details

INTERNAL WIRE MANAGEMENT

FRONT VIEW

SIDE VIEW

FRONT VIEW

TOP VIEW

SINGLE SET

INTERNAL SHELVES

TOP VIEW

SEAMLESS WIRE PASSAGE BETWEEN UNITS

3 SETS VIEW

METAL SHUTTERS WITH MAGNETIC LATCH AND RECESSED PLASTIC HANDLES

NOTES :

1. STRUCTURE IN 2MM THICK POWDER COATED STEEL & PRE LAMINATED MDF.
2. MODULAR, FLAT PACK AND KNOCK-DOWN CONSTRUCTION
3. ALL COSMETIC PANELS IN 0.8MM POWDER COATED STEEL
4. INTEGRATED TWO LEVEL LATERAL WIRING AND SEPARATE TERMINATION

REVISION	DESCRIPTION	MAP	12.05.2013	SMS
		NAME	DATE	APPROVAL ID
REMARK	DESCRIPTION			
PRODUCT PART NUMBER	PRELAM PARTICLE BOARD	REMARK	MATERIAL DESCRIPTION	POST TREATMENT
TOL DIMS ±	TOL ANGLE STD	FILLET TOL STD	DRAFT ANGLE STD	OTHERS BENDING-±0.5 PUNCHING-±0.2
				UNT: mm
				NTS
				PROJECTION
				ASSEMBLY
				REPLACES
				REPLACES
				RE
				STRUCTURAL
				PAGE 1
				OF 1

- > Medium Back/ High Back
- > Net / Cushion back
- > Chair seat with Cushion
- > Synchro knee-tilt Mechanism
- > Lock at any position
- > International quality Gas-lift
- > PU fixed / adjustable Arms
- > Powder Coated / Chrome Spider Base
- > Manager / Staff and visitor seating

Models





Model: 1

Specification:- Model 1 (Premium Manager chair)

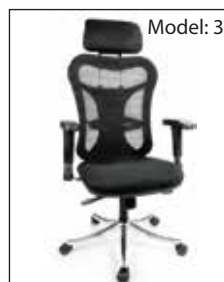
Medium back chair, Art Leather cushion back and seat made out of self contoured 12 mm thick hot pressed, seat cushion 52 - 55 density moulded foam, seat bottom covered with ABS, synchro mechanism for tilting 1:3 degree ratio with tension control knob & front locking system, height adjustment gas lift, Fixed moulded PU arm rest, metal chrome finish spider base with wheels.



Model: 2

Specification:- Model 2 (Premium Manager chair)

Medium back chair, Art Leather cushion back and seat made out of self contoured 12 mm thick hot pressed, seat cushion 52 - 55 density moulded foam, seat bottom covered with ABS, synchro mechanism for tilting 1:3 degree ratio with tension control knob & front locking system, height adjustment gas lift, Fixed moulded PU arm rest, metal chrome finish spider base with wheels.



Model: 3

Specification:- Model 3 (Premium Manager chair)

High back chair, Plastic moulded netted back and cushion seat made out of self contoured 12 mm thick hot pressed, seat cushion 52 - 55 density moulded foam, seat bottom covered with ABS, synchro mechanism for tilting 1:3 degree ratio with tension control knob & front locking system, height adjustment gas lift, Adjustable PU arm rest, adjustable head rest and lumbar support, metal chrome finish base with wheels.



Model: 4

Specification:- Model 4 (Staff chair)

Medium back chair, Mesh back and cushion seat made out of self contoured 12 mm thick hot pressed, seat cushion 52 - 55 density moulded foam, seat bottom covered with ABS, synchro mechanism for tilting 1:3 degree ratio with tension control knob & front locking system, height adjustment gas lift, Adjustable PU arm rest, optional lumbar support, powder coated finish spider base with wheels.



Model: 5

Specification:- Model 5 (Staff chair)

Medium back chair, Back and seat made out of self contoured 12 mm thick hot pressed, seat cushion 52 - 55 density moulded foam, seat bottom covered with ABS, synchro mechanism for tilting 1:3 degree ratio with tension control knob & front locking system, height adjustment gas lift, Fixed PU arm rest, powder coated finish spider base with wheels. Variety of colours available.

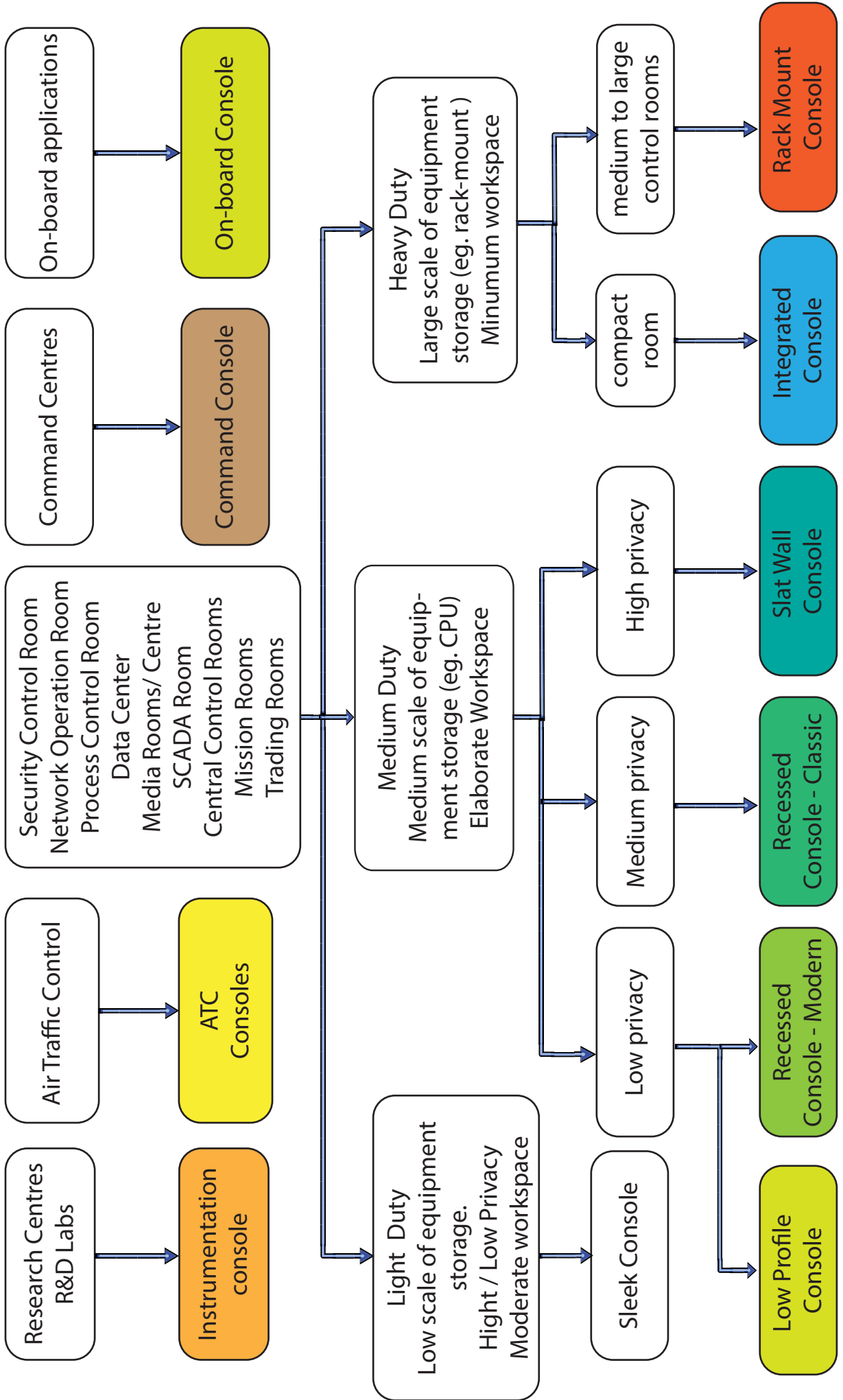


Model: 6

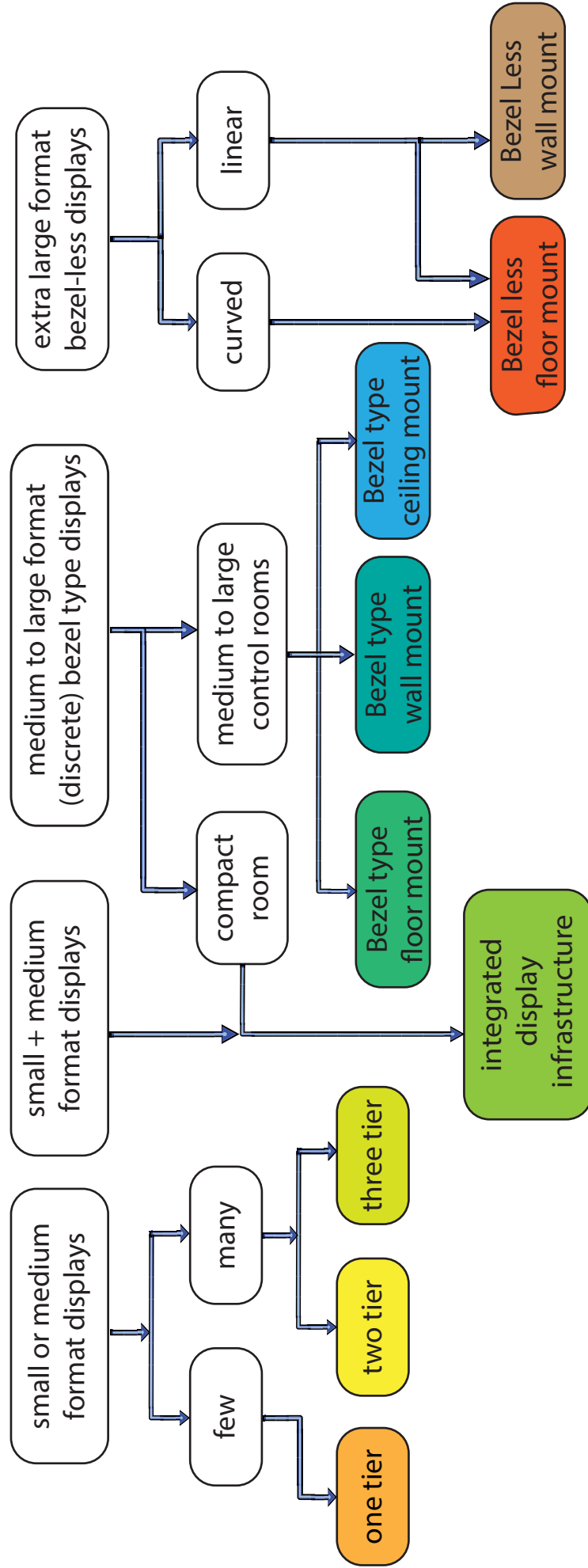
Specification:- Model 6 (Visitor chair)

Low back chair, Back and seat made out of self contoured 12 mm thick hot pressed, seat cushion 52 - 55 density moulded foam, seat bottom covered with ABS, Fixed PU arm rest, optional lumbar support, powder coated finish spider base with wheels.

How to identify and select the right product ?



How to identify and select the right display solution ?



Onsite consultation

Layout design assistance

Product visualisation

Product customisation

Please email us the following details to provide you the most appropriate proposal.

1. No. of operators.
2. No. of monitors per operator.
3. No. of CPU per operator.
4. Estimated size & model no. of the monitors.
5. Type of CPU (rack mount or tower type).
6. Equipments other than CPU to be accomodated. (if any)
7. Is Videowall required ? If yes,
 - 7(a) Estimated size of the display.
 - 7(b) Estimated no of columns and rows.
 - 7(c) Type of mounting - Floor mount / Wall mount.
8. Estimated size of the control room.
9. Estimated layout of the control room.

Ultra Modern



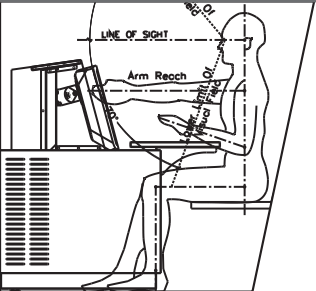
We believe that technical environments is no different from any other workspace when it comes to aesthetic appeal. Work environments need to be inspiring and should positively influence the morale and confidence of the operator in order to deliver performance. All our products are frequently updated to ensure that it matches with the changes in lifestyle and technology.

State Of Art



We are obsessed with technology and constantly strive to update our products with the best in technology, materials and processes. We adopt the latest engineering tools for designing each and every part of our solution to ensure that they are optimized of the best performance.

Human Centric



We believe that the best way to achieve operator performance is to respect human factors. Work environments should inspire the individual to uplift his morale and confidence. Our team has extensive knowledge in human factors engineering to ensure the products and solutions comply with the highest standards of ergonomics.

TEQZO Environments

Head Office :
TEQZO Retail Products Private Limited
No. 410, CMR Road, Kalyan Nagar,
Bangalore 560043. INDIA.

Tel : +91 80 4121 8823
Email : enquiry@teqzo.com
URL : environments.teqzo.com

We are a company engaging in research, design, manufacture, supply and commission of products meant for technical interiors and environments. Our focus is on environments like control rooms, control centres, shop floors and other work environments.

We are an ISO 9001:2008 company. We have achieved substantial growth by servicing clients including governmental organizations and multi national companies both in India and abroad.

Contact us for more details.