

TE  ZO Environments



PRODUCTS 2016 -17

## About Us

We are a company engaging in research, design, manufacture, supply and commission of products meant for technical interiors and environments. Our focus is on environments like control rooms, control centres, shop floors and other work environments.

We are an ISO 9001:2008 company. We have achieved substantial growth by servicing clients including governmental organizations and multi national companies both in India and abroad.

## Vision

Our vision is to be a leader in providing human centric technical furniture solutions that are ultra modern and state-of-art.

Commitment : Customer satisfaction, Quick response, Highest Quality

Trust : High performance , High economic value, Quick delivery

Value : Ultra Modern, State-of-art, Human centric

## Core Strength

We have a strong background in human factors and ergonomics which are key to operator comfort and efficiency. Apart from these we have in-depth knowledge in technology, design and manufacturing.

Capabilities: R&D, Design, Manufacture, Supply & Commission.

## Strategy

Leverage our core strength (ergonomics, functionality and aesthetics) by partnering with the like minded organisations to provide comprehensive solutions to end customers.

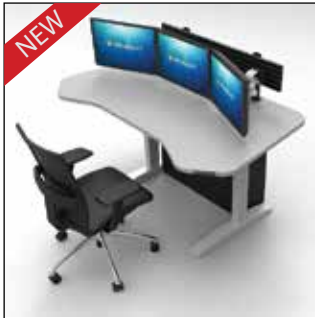
Differentiator : Ultra Modern, State-of-art, human centric

## Products

Rack Mount Consoles, Cabinet Mount Consoles, Cabinet-Less consoles, Ultra Low Profile Consoles, High-Tech Consoles, Speciality Consoles - ATC Consoles, On-board Consoles, Command Centre Consoles, Data Centre Consoles, Machine Consoles, Video Walls (Bezel Type and Bezel-Less Type), NOC Furniture, Reception Furniture, Lecterns, Video Conferencing Furniture, Staff Work stations, Training Room Furniture's, Task Chairs, Custom Enclosures. We also develop custom built consoles according to the specification and drawings of the clients, tailor made to suite specific conditions and locations.

## Clients

Few of our esteemed clients - Wipro Limited-CATS Control Room, ISRO-ISTRAC-Ground Station Satellite Tracking Control Room, Al-Sayed Contracting, Trading & Industry (KSA) , Al Imam University(KSA), Saudi Post (KSA), Mazaille Al Khaleej (KSA), Gulf Networks (Qatar), Cisco (India), Diebold (India), Elcome Marine (India), Allied Digital (India), Taj Vivanta (India), Dept. of Light Houses and Light Ships (India), Power Grid Corporation of India (India), PMA Controls (India).



Height Adjustable Table



Large Slat-wall Console



Recessed Console - Modern



ATC Console



On Board Console



Instrumentation Console



Video-wall - Bezel Less



Video-wall - Bezel Type



Sleek Console



Recessed Console - Classic



Low Profile Console



Rack Mount Console



Command Console



Integrated Console



Small Slat-wall Console



Accessories

## Features

- > Unmatched Stability
- > Smooth and Quiet OS
- > Electric control with UP/DOWN Switch
- > Cable management solutions available
- > Height Range : 600 - 1250mm
- > Lifting Capacity : 120kg each leg
- > Designed as per ISO 11064

## Height Adjustable Table



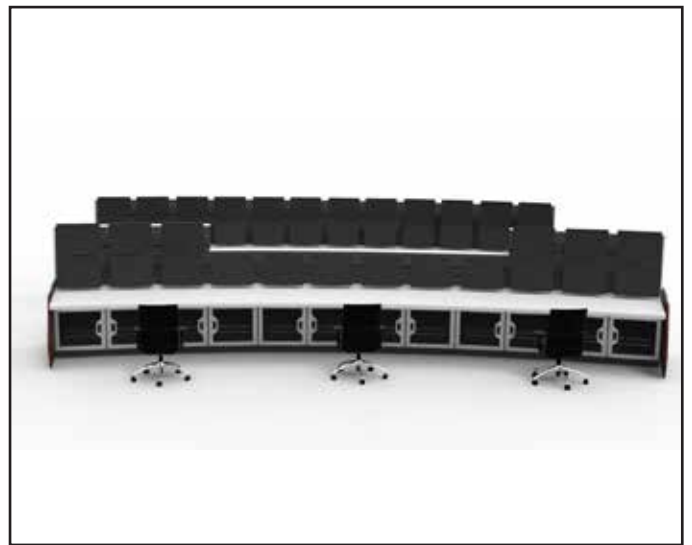
## Models



- > Modular and Knock-down design
- > Linear slat wall panel to hang display
- > Integrated wire management
- > More privacy & more flexibility
- > Integrated wire management
- > Inbuilt thermal management
- > Pin-up board and writing board
- > High on Aesthetics
- > Designed as per ISO 11064



Models





- > Medium duty application
- > Pre-laminated MDF understructure
- > Recessed monitor placement
- > Cabinet for CPU storage
- > Inbuilt thermal management
- > Display mounted on flexible mounts
- > ISO 11064 compliant design
- > Ultra modern appearance



Models

Model : RCM 1



**General Specification :**

Recessed Consoles are typical control room consoles with recessed work-surface for display mounting.

**Construction :**

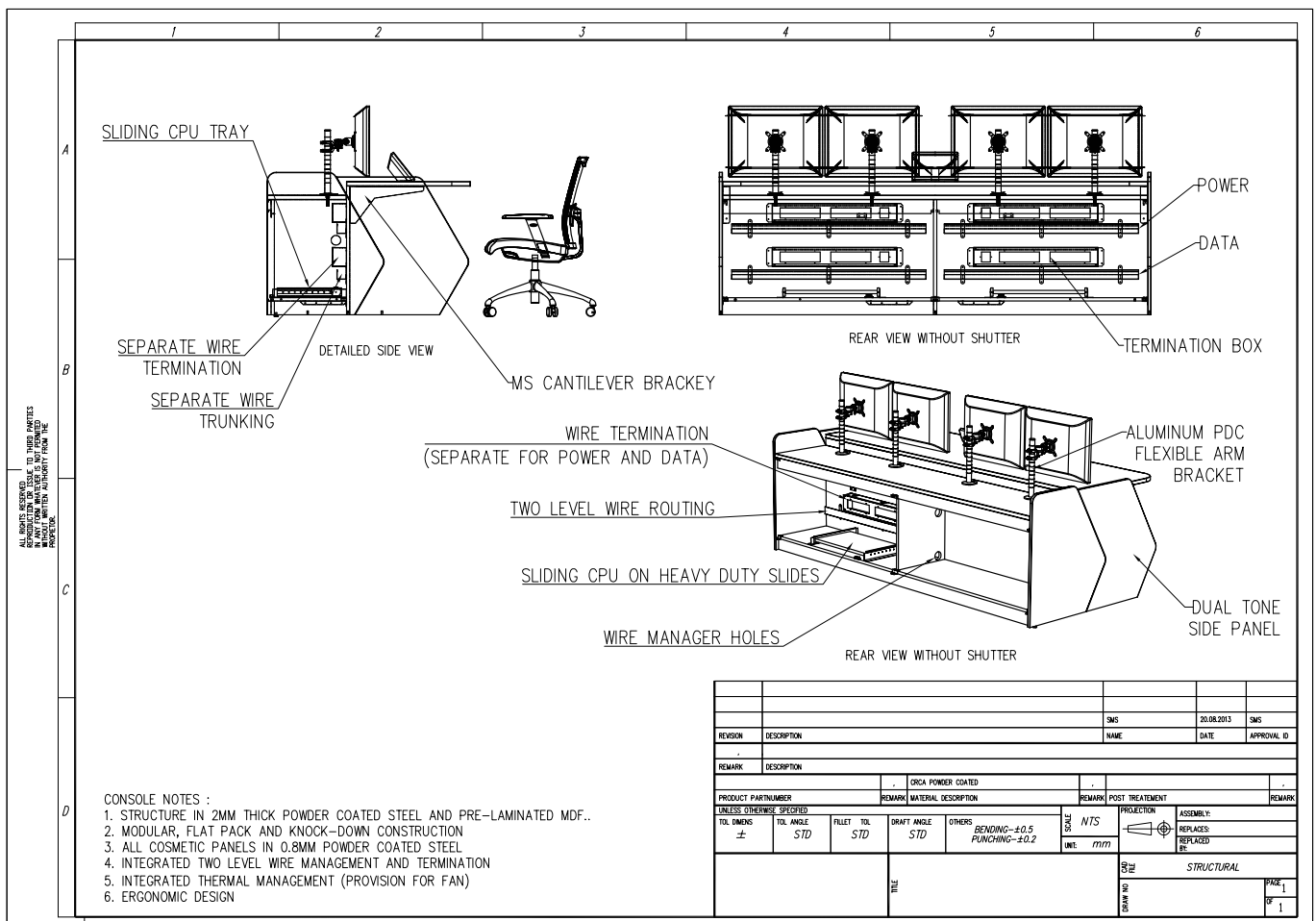
Recessed consoles are made of 18mm pre-laminated MDF and 2mm thick powder coated CRCA, with provision for rear as well as front opening. Cabinets are enclosed with metal shutters with magnetic lock and inbuilt ventilation. These consoles have retractable CPU shelf mounted on heavy duty slides.

**Work Surface :** All work surfaces are made of 25mm pre-laminated MDF, with optional 12mm thick acrylic overlay.

**Wire Management :** Recessed consoles have two levels of wire manager conduits along with power and data termination ports both within the cabinet. Internal wiring is done for forced cooling fans.

**Storage Capacity :** Equipments on the recessed-console can be stored on the retractable shelf available inside the cabinet.

**Finish :** All metal items are powder-coated up to 50micron thickness to the desired shade. Shades of pre-laminated MDF can be selected from our standard colours and finishes.

**Technical Details**

- > As per IEC 60297/ DIN 41494
- > Modular (vertical & horizontal)
- > Knock-down design
- > Powder coated steel understructure
- > State-of-art automatic lift column
- > Sleek and Modern aesthetics.
- > ISO 11064 compliant design



Models

Model: ATCC-1



Model: ATCC-3



Model: ATCC - 2





**General Specification :**

ATC Consoles consist of modular slat wall partition with retractable rack mount cabinet and automatic height adjustable work surface.

**Construction :**

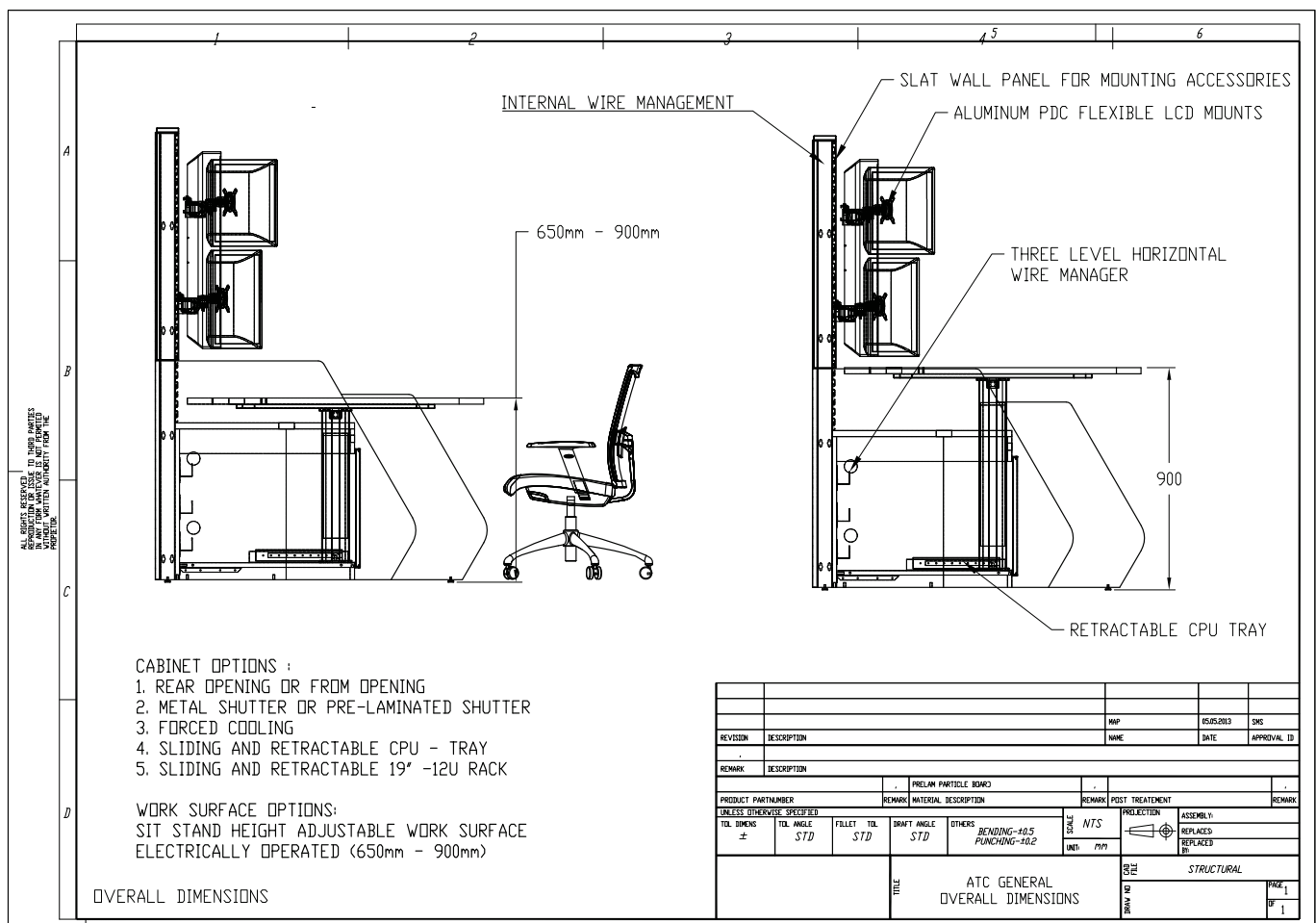
Modular slat wall partition is made of steel powder coated structure. Slat walls provide completely flexibility to hang monitors and other equipments. Retractable rack mount structure is a 14U 19" rack based module which is independent of the slat wall module. Work surface is mounted on an automatic dual column electronic system with touch controls and adequate safety features.

**Work Surface :** All work surfaces are made of 25mm (optional 35mm) pre-laminated MDF.

**Wire Management :** Slat wall partition of the ATC console have two levels of wire manager conduits along with power and data termination ports. Retractable rack mount structure will have its own termination ports.

**Storage Capacity :** Equipments on the ATC console can be stored in the retractable rack mount unit. Display elements like monitors can be fixed on the slat walls provided.

**Finish :** All metal items are powder-coated up to 50micron thickness to the desired shade. Shades of pre-laminated MDF can be selected from our standard colours and finishes.

**Technical Details**

- > As per IEC 60297/ DIN 41494
- > Modular construction
- > Knock-down design
- > Floor grouting for on-board mounting
- > Ergonomic on-board handle bar
- > Powder coated GI steel construction
- > Multi-tier monitor mounting
- > Integrated wire management
- > Heavy duty application
- > High on Aesthetics



## Models

Model: OBC - 1



Model : OBC - 2



Model : OBC - 3



**General Specification :**

On-board consoles are modular, knock-down and floor mounted units which can be joined to develop any desired layout for on-board application.

**Construction :**

On-board consoles are built using powder coated GI steel. Understructure is made of 2mm tubular sections with 1mm thick outer panels secured with screws. Understructure can be grouted firmly to the floor. Ergonomic stainless steel handle bar is an integral part of the console. On-board consoles can be fitted with multi-tier monitor systems. CPU and other equipments can be stored below the consoles.

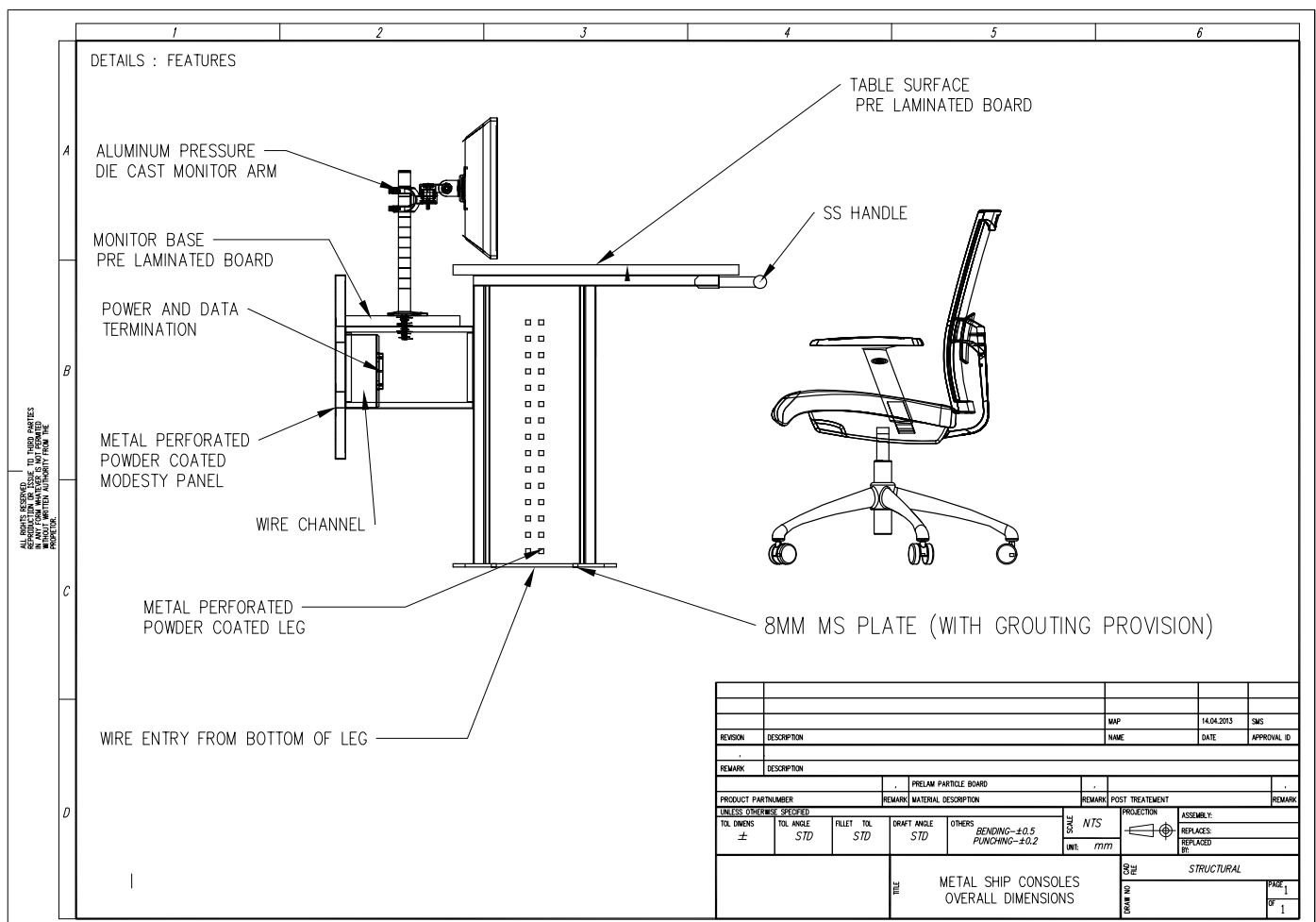
**Work Surface :** All work surfaces are made of 25mm (optional 35mm) marine grade pre-laminat-

ed MDF. Secondary monitor mounting base is also made of similar material.

**Wire Management :** On-board consoles have two level wire management conduits to channel power and data cables. Power and data termination modules are also available between the conduits.

**Storage Capacity :** On-board consoles have limited storage facility as the CPU and other equipments are expected to be stored in mounting racks. However, leg based accessories are available to store additional equipments.

**Finish :** All metal items are powder-coated up to 50micron thickness to the desired shade. Shades of pre-laminated MDF can be selected from our standard colours and finishes.

**Technical Details**

- > As per IEC 60297/ DIN 41494
- > Heavy Duty construction
- > Powder coated steel understructure
- > Integrated display infrastructure
- > Large equipment capacity
- > ISO 11064 compliant design
- > Ideal for research centres
- > Inbuilt thermal management
- > Display up to 32" LCD possible.



## Models

Model: INC-1





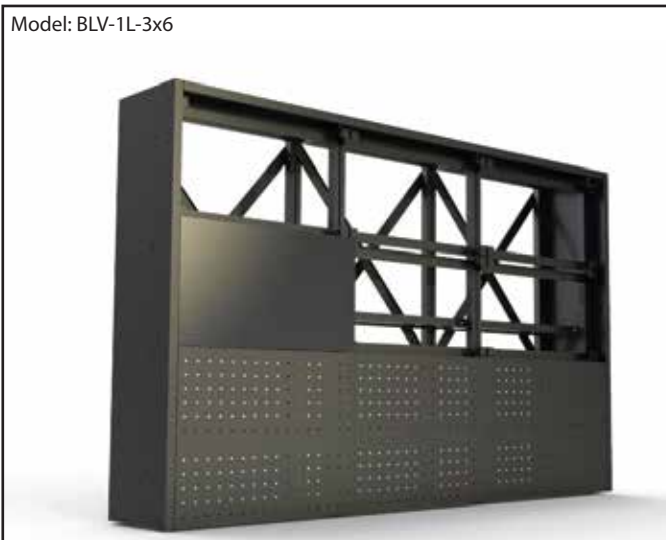


- > As per IEC 60297/ DIN 41494
- > Modular (vertical & horizontal)
- > Knock-down design
- > Powder coated steel structure
- > Curved and Straight options
- > Sleek and Modern aesthetics
- > Quick Installation
- > Provision for fine adjustments



Models

Model: BLV-1L-3x6



Model: BLV-2L-3x9



**General Specification :**

Bezel Less Video Wall structure are floor mounted structure that consist of modular elements that could be configured in linear as well as curved orientation in any required matrix.

**Construction :**

All structural elements are made of modular, knock-down parts constructed out of 2.5mm thick powder coated steel machined to extreme accuracy. Connecting elements are precision machined out of stainless steel. All cosmetic elements are made of 0.8mm thick powder coated steel.

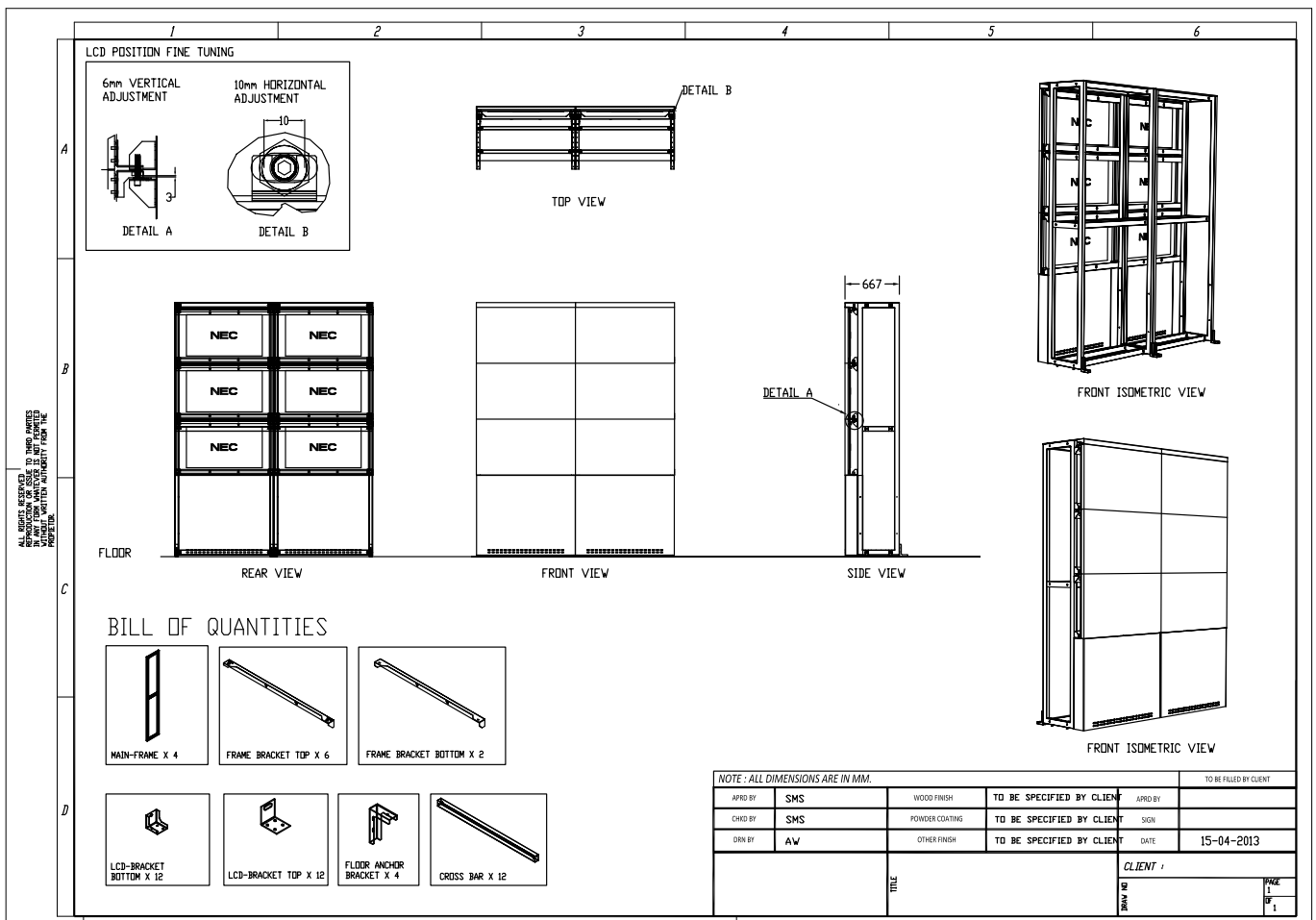
**Sizes :** Bezel Less Video wall is tailor made to suite specific model of the display and the required matrix, either in linear format or in curvilinear

format. Individual display can be planned to be oriented in landscape as well as in portrait format.

**Wire Management :** Bezel Less video wall have inbuilt wiremanagement conduits and termination ports behind the structure.

**Accuracy :** Bezel Less video wall structures are built for extreme accuracies. The structure can absorb floor level unevenness of up to 20mm. Gap between the displays can be adjusted to 0.5mm. Provision for fine tuning is available for both horizontal (+/-) 10mm as well as for vertical alignment (+/-) 3mm.

**Finish :** All metal items are powder-coated up to 50micron thickness to the desired shade.

**Technical Details**

**General Specification :**

Slat wall consoles are modular cabinet type consoles with heavy duty aluminium slat-wall partition as an integral part of the consoles. Slat-walls can hang displays and other accessories.

**Construction :**

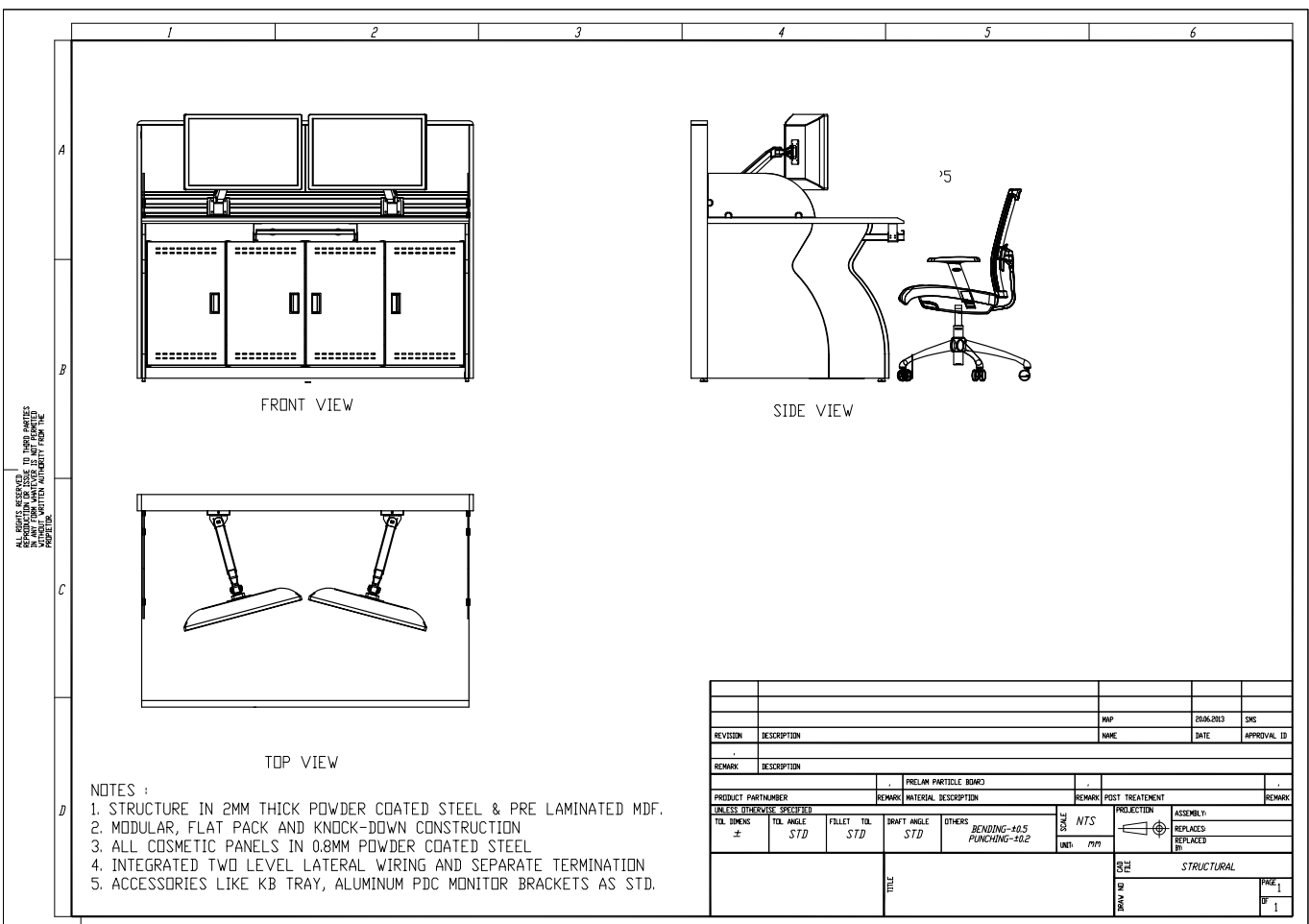
Slat-wall consoles are constructed using 75mm thick slat-wall partition and 18mm thick pre-laminated MDF cabinet. Slat wall extrusions are made of 2mm thick aluminium alloy 6063T6 powder coated with up to 50micron thickness. Other partition structure is made of 2mm thick powder coated CRCA. Partition has inbuilt pin-up and writing board apart from internal wiring. Cabinet is constructed using 18mm pre-laminated MDF using modular fittings. Cabinet has metal powder coated shutters with heavy duty CPU pull out tray.

**Work Surface :** All work surfaces are made of 25mm pre-laminated MDF with high scratch resistance, seamless joints, flammability –class A and non porous and edges covered with 2mm edge-band.

**Wire Management :** Slat wall consoles have continuous two level wire management conduits to channel power and data cables. Power and data termination modules are also available between the conduits.

**Storage Capacity :** Slat-wall consoles have storage facility for CPU and other equipments within the cabinet.

**Finish :** All metal items are powder-coated up to 50micron thickness to the desired shade. Shades of pre-laminated MDF can be selected from our standard colours and finishes.

**Technical Details**

- > Modern, sleek and elegant
- > Complete metal understructure
- > Hanging CPU and wire management
- > Light duty application
- > Modular and Knock-down design
- > Integrated wire management
- > More privacy
- > High on Aesthetics
- > Designed as per ISO 11064



## Models

Model: SLC-1



**General Specification :**

Sleek Console is a type of control room console that are modern, sleek and elegant.

**Construction :**

Sleek consoles are single built units that are modular and knock-down. Understructure is completely metallic with 2 inch tubular legs with metal embossed modesty panel.

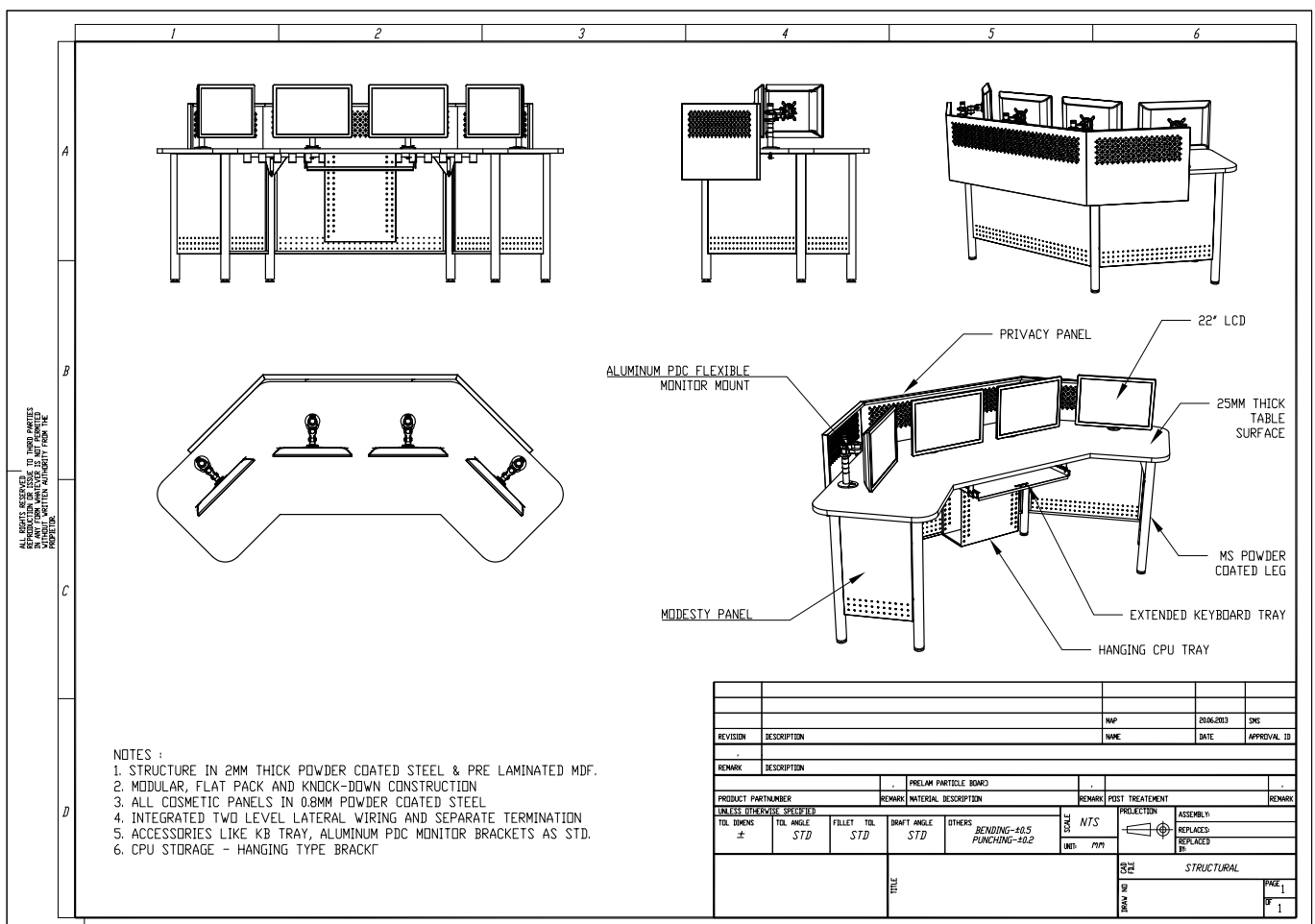
**Work Surface :** All work surfaces are made of 25mm pre-laminated MDF with high scratch resistance, seamless joints, flammability –class A and non porous and edges covered with 2mm edge-band.

**Wire Management :** Sleek consoles have simple wire management clips underneath the work surface to channel power and data cables. Power

and data termination ports are fixed underneath the work surface.

**Storage Capacity :** Sleek consoles have limited storage facility for CPU.

**Finish :** All metal items are powder-coated up to 50micron thickness to the desired shade. Shades of pre-laminated MDF can be selected from our standard colours and finishes.

**Technical Details**



- > Medium duty application
- > Pre-laminated MDF understructure
- > Recessed monitor placement
- > Cabinet for CPU Storage
- > Integrated task light
- > Acrylic overlay on work surface
- > Inbuilt thermal management
- > Display mounted on flexible mounts
- > ISO 11064 compliant design



## Models

Model: RCC1



Model: RCC2



**General Specification :**

Recessed Consoles are typical control room consoles with recessed work-surface for display mounting and integrated task lights.

**Construction :**

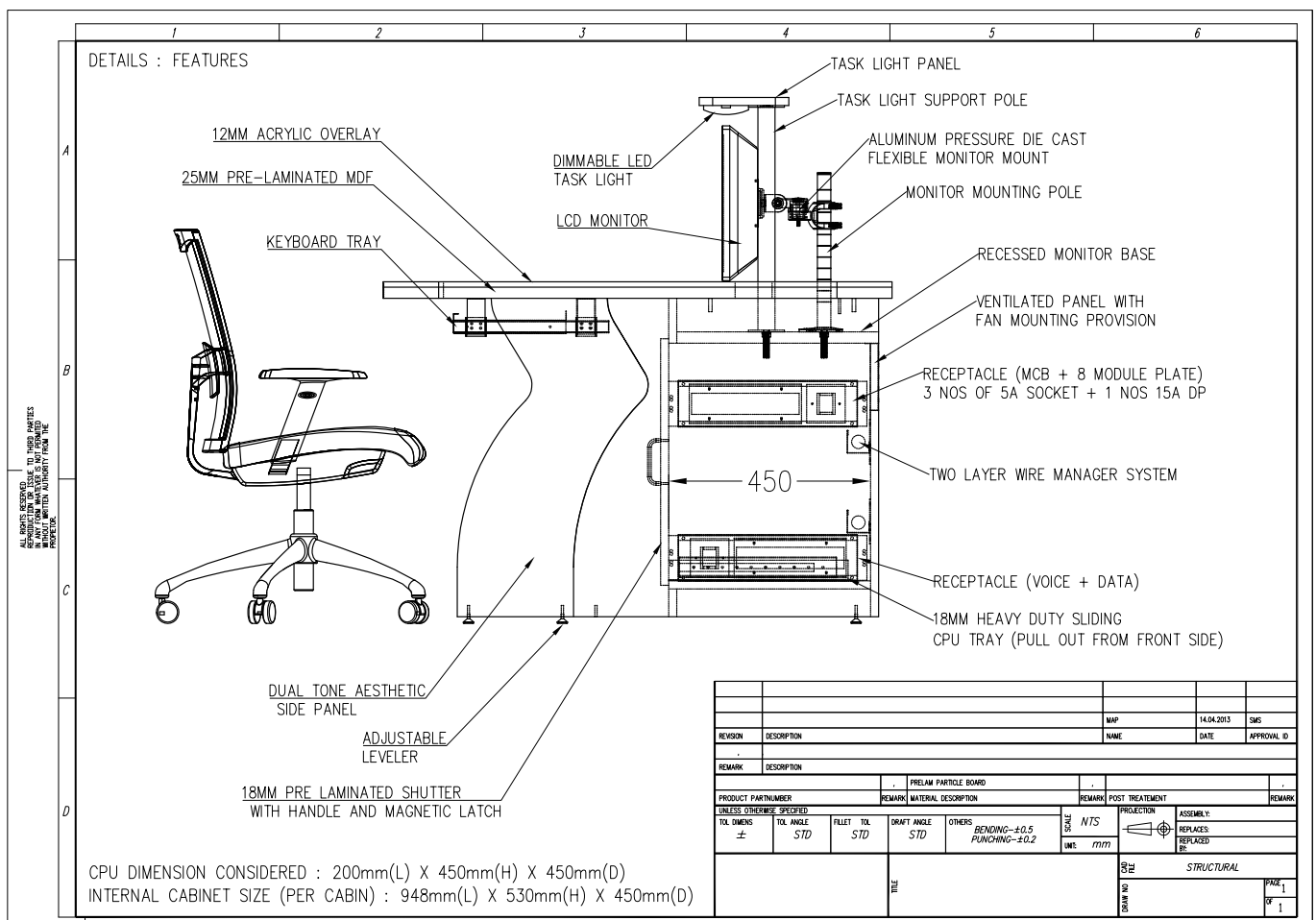
Recessed consoles are made of 18mm pre-laminated MDF and 2mm thick powder coated CRCA, with provision for rear as well as front opening. Cabinets are enclosed with metal shutters with magnetic lock and inbuilt ventilation. These consoles have retractable CPU shelf mounted on heavy duty slides.

**Work Surface :** All work surfaces are made of 25mm pre-laminated MDF, with optional 12mm thick acrylic overlay.

**Wire Management :** Recessed consoles have two levels of wire manager conduits along with power and data termination ports both within the cabinet. Internal wiring is done to the task lighting and forced cooling fans.

**Storage Capacity :** Equipments on the recessed-console can be stored on the retractable shelf available inside the cabinet.

**Finish :** All metal items are powder-coated up to 50micron thickness to the desired shade. Shades of pre-laminated MDF can be selected from our standard colours and finishes.

**Technical Details**

- > As per IEC 60297/ DIN 41494
- > Modular construction
- > Knock-down design
- > Powder coated steel shutters
- > Multiple monitor mounting
- > Integrated wire management
- > Medium duty application
- > Dual tone side panel
- > High on Aesthetics



## Models

Model: LPC1



Model: LPC2



Model: LPC3



Model: LPC4



**General Specification :**

Low Profile consoles are cabinet mount consoles that are modular, knock-down units which can be joined to develop any desired layout for medium duty control room application.

**Construction :**

Low Profile Console cabinets are constructed using 18mm thick pre-laminated MDF and 2mm thick powder coated steel. Cabinets have provision for front or rear opening to access the equipments. Cabinet are enclosed with 0.8mm thick powder coated metal shutters with louvres for ventilation. Provision for forced cooling is integral to all shutters. CPU and other equipments can be stored below the consoles.

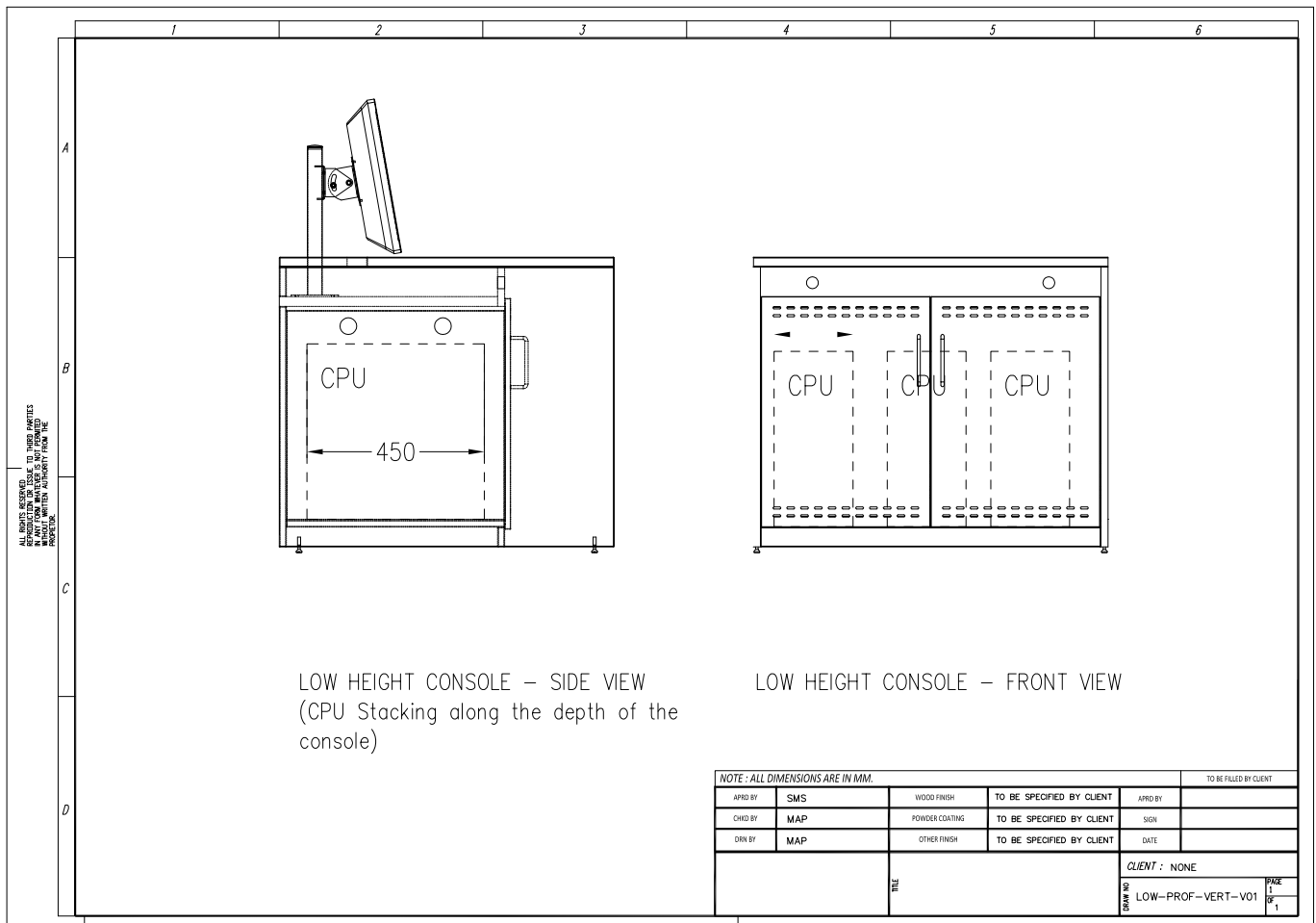
**Work Surface :** All work surfaces are made of

25mm (optional 35mm) pre-laminated MDF.

**Wire Management :** Low profile consoles have continuous two level wire management conduits to channel power and data cables. Power and data termination ports are also available between the conduits. Work surfaces have integrated wire management grommets.

**Storage Capacity :** Low profile consoles have moderate storage facility. Regular CPU and other light duty equipments can be stored within the cabinet.

**Finish :** All metal items are powder-coated up to 50micron thickness to the desired shade. Shades of pre-laminated MDF can be selected from our standard colours and finishes.

**Technical Details**



- > As per IEC 60297/ DIN 41494
- > Modular construction
- > Knock-down design
- > Powder coated steel shutters
- > Multiple monitor mounting
- > Integrated wire management
- > Heavy duty application
- > Dual tone side panel
- > High on Aesthetics



## Models

Model:RMC1



Model:RMC2



Model:RMC3



Model:RMC4





**General Specification :**

Rack Mount consoles are heavy duty fully metal consoles which has 19" type 14U rack mount capacity below the work space.

**Construction :**

Rack mount unit is constructed using 2mm thick CRCA framework with 0.8mm thick outer panel. It has front and rear open-able metal shutters with magnetic latch and optional lock. Shutters can be with clear acrylic window or with natural ventilation to forced cooling ventilation.

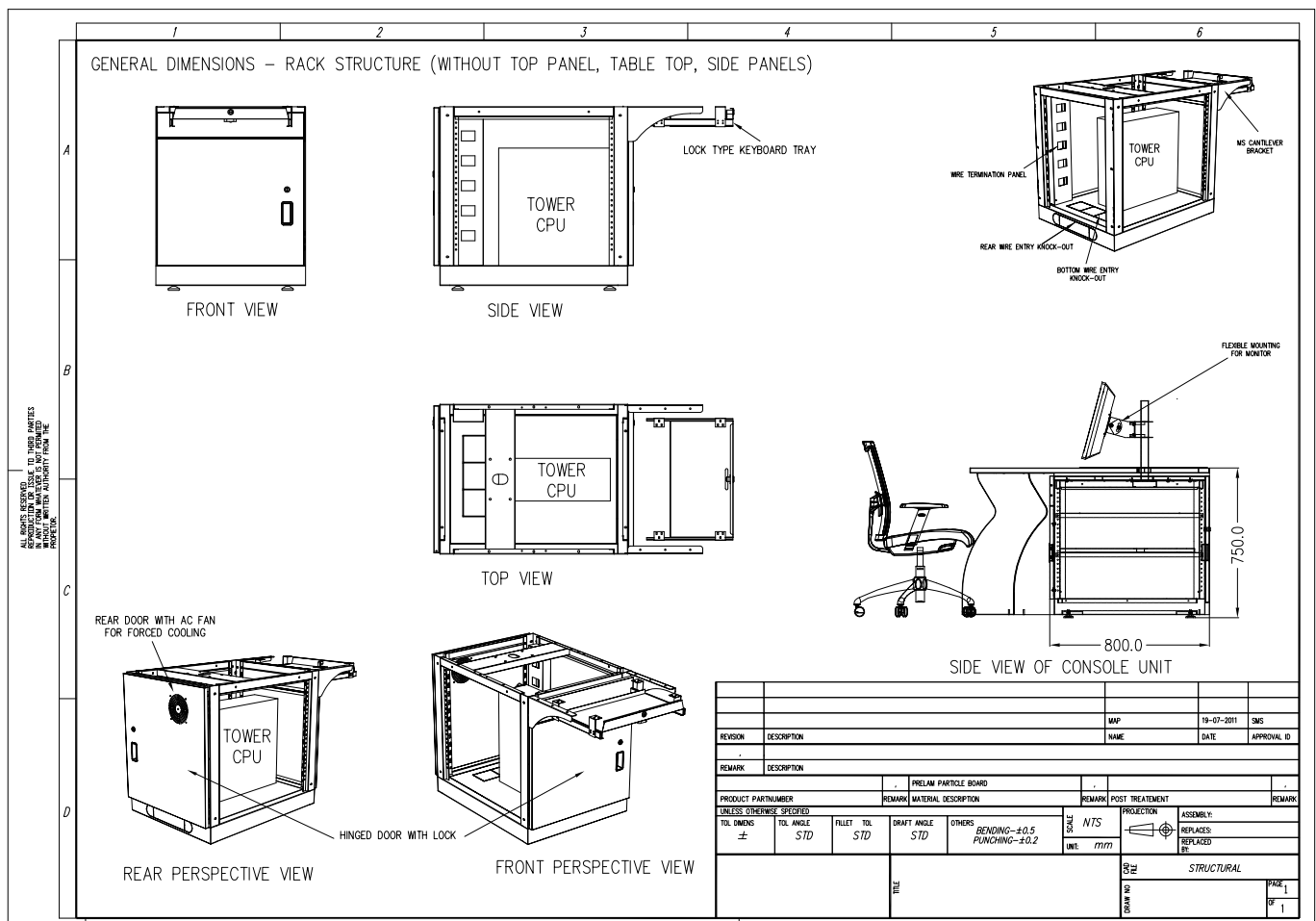
**Work Surface :** All work surfaces are made of 25mm pre-laminated MDF.

**Wire Management :** Rack mount consoles have two levels of wire manager conduits along with

power and data termination ports.

**Storage Capacity :** Rack mount consoles have 14U rack mount capacity at the lower portion of each unit. Each rack mount storage is equipped with a retractable CPU storage rack with heavy duty slides.

**Finish :** All metal items are powder-coated up to 50micron thickness to the desired shade. Shades of pre-laminated MDF can be selected from our standard colours and finishes.

**Technical Details**

- > Modular and Knock-down design
- > Linear slat wall panel to hang display
- > Integrated wire management
- > More privacy & more flexibility
- > Integrated wire management
- > Inbuilt thermal management
- > Pin-up board and writing board
- > High on Aesthetics
- > Designed as per ISO 11064



## Models

Model: SWC-1



**General Specification :**

Slat wall consoles are modular cabinet type consoles with heavy duty aluminium slat-wall partition as an integral part of the consoles. Slat-walls can hang displays and other accessories.

**Construction :**

Slat-wall consoles are constructed using 75mm thick slat-wall partition and 18mm thick pre-laminated MDF cabinet. Slat wall extrusions are made of 2mm thick aluminium alloy 6063T6 powder coated with up to 50micron thickness. Other partition structure is made of 2mm thick powder coated CRCA. Partition has inbuilt pin-up and writing board apart from internal wiring. Cabinet is constructed using 18mm pre-laminated MDF using modular fittings. Cabinet has metal powder coated shutters with heavy duty CPU pull out tray.

**Work Surface :** All work surfaces are made of 25mm pre-laminated MDF with high scratch resistance, seamless joints, flammability –class A and non porous and edges covered with 2mm edge-band.

**Wire Management :** Slat wall consoles have continuous two level wire management conduits to channel power and data cables. Power and data termination modules are also available between the conduits.

**Storage Capacity :** Slat-wall consoles have storage facility for CPU and other equipments within the cabinet.

**Finish :** All metal items are powder-coated up to 50micron thickness to the desired shade. Shades of pre-laminated MDF can be selected from our standard colours and finishes.

**Technical Details**